

## Major Vault Protein (MVP) Antibody

Mouse Monoclonal Antibody [Clone SPM280]

Catalog No	Format	Size
9961-MSM2X-P0	Purified Ab with BSA and Azide at 200ug/ml	20 ug
9961-MSM2X-P1	Purified Ab with BSA and Azide at 200ug/ml	100 ug
9961-MSM2X-P1ABX	Purified Ab WITHOUT BSA and Azide at 1.0mg/ml	100 ug

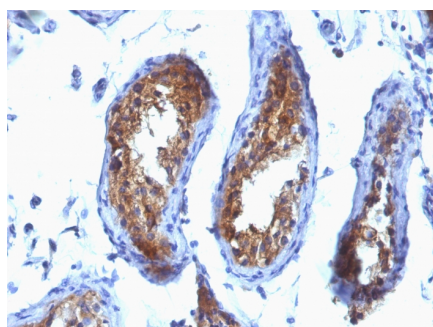
Applications	Tested Dillution	Note
Flow Cytometry (Flow)	1-2ug/million cells	
Immunofluorescence (IF)	1-3ug/ml	
Immunohistochemistry (IHC)	1-2ug/ml	30 min at RT. Staining of formalin-fixed tissues requires heating tissue sections in 10mM Tris with 1mM EDTA, pH 9.0, for 45 min at 95°C followed by cooling at RT for 20 minutes

### Product Details

<b>Clone</b>	SPM280
<b>Gene Name</b>	MVP
<b>Immunogen</b>	proteins precipitated from human breast cancer MCF-7 cells
<b>Host</b>	Mouse
<b>Clonality</b>	Monoclonal
<b>Isotype / Light Chain</b>	IgG1 / Kappa
<b>Mol. Weight of Antigen</b>	104-110kDa
<b>Cellular Localization</b>	Cytoplasm, Nuclear pore complex, Nucleus, Perinuclear region
<b>Species Reactivity</b>	Human
<b>Positive Control</b>	MCF-7 or HeLa cells. Breast tumors.

\*Optimal dilution for a specific application should be determined.

### Product Images for Major Vault Protein (MVP) Antibody



Formalin-fixed, paraffin-embedded human Testicular Carcinoma stained with MVP Monoclonal Antibody (SPM280).

**Specificity & Comments**

Recognizes a protein of 104kDa-110kDa, characterized as major vault protein (MVP). Vaults are large ribonucleoprotein particles (RNPs) present in all eukaryotic cells. They have a complex morphology, including several small molecules of RNA, but a single protein species. The MVP accounts for 70% of their mass. Their shape is reminiscent of the nucleopore central plug. Treatment of cells with estradiol increases the amount of MVP in nuclear extract. The hormone-dependent interaction of vaults with ER is prevented in vitro by sodium molybdate. Antibodies to estrogen, progesterone and glucocorticoid receptors are able to co-immunoprecipitate the MVP. MVP is overexpressed in many neoplastic tissues and cell lines. Expression of MVP predicts a poor response to chemotherapy.

---

**Limitations and Warranty**

This antibody is available for research use only and is not approved for use in diagnosis. There are no warranties, expressed or implied, which extend beyond this description. Company is not liable for any personal injury or economic loss resulting from this product.

---

**Supplied As**

200ug/ml of Ab Purified from Bioreactor Concentrate by Protein A/G. Prepared in 10mM PBS with 0.05% BSA & 0.05% azide. Also available WITHOUT BSA & azide at 1.0mg/ml.

---

**Storage and Stability**

Antibody with azide - store at 2 to 8°C. Antibody without azide - store at -20 to -80°C. Antibody is stable for 24 months. Non-hazardous. No MSDS required.

---

**Research Areas**

Immunology

---