

Nidogen / Entactin Antibody

Rat Monoclonal Antibody [Clone ELM1]

Catalog No	Format	Size
MS18073-RTM1-P0	Purified Ab with BSA and Azide at 200ug/ml	20 ug
MS18073-RTM1-P1	Purified Ab with BSA and Azide at 200ug/ml	100 ug
MS18073-RTM1-P1ABX	Purified Ab WITHOUT BSA and Azide at 1.0mg/ml	100 ug

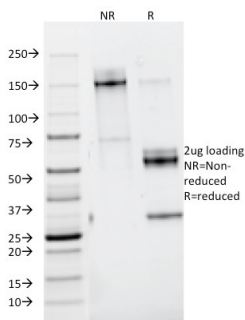
Applications	Tested Dillution	Note
--------------	------------------	------

Product Details

Clone	ELM1
Immunogen	Murine EHS laminin preparation
Host	Rat
Clonality	Monoclonal
Isotype / Light Chain	IgG2a / Kappa
Mol. Weight of Antigen	100 105 110 135 and 80kDa
Cellular Localization	Basement membrane, Extracellular matrix, Extracellular space, Secreted
Species Reactivity	Guinea Pig, Mouse
Positive Control	Mouse kidney or eye tissue.

*Optimal dilution for a specific application should be determined.

Product Images for Nidogen / Entactin Antibody



SDS-PAGE Analysis of Purified Nidogen Mouse Monoclonal Antibody (ELM1).
Confirmation of Purity and Integrity of Antibody.

Specificity & Comments

It reacts with the intact (150kDa) nidogen as well as its proteolytic fragments of 135kDa, 110kDa, 100kDa, and 80kDa. This MAb does not cross-react with other basement membrane components or fibronectin. Entactin/Nidogen is a ubiquitous multi-domain basement membrane protein. Basement membranes are the earliest extracellular matrices produced during embryogenesis. They are synthesized and incorporated into the supramolecular architecture of several components, including laminins, Collagen IV, Nidogen and proteoglycans. Nidogen/Entactin, a sulfated glycoprotein, acts as a link between the extracellular matrix molecules Laminin 1 and Collagen Type IV, and thereby participates in the assembly of basement membranes. Nidogen is synthesized and secreted in primary and established mesenchymal peritubular cells and myoepithelial cells, and it affects adhesion of peritubular cells in an autocrine manner. Nidogen is expressed during embryonic and fetal development exclusively in fully developed basement membranes of the ectoderm and is not expressed in the developing endodermal basement membrane or in membranes disrupted during mesoderm formation.

Supplied As

200ug/ml of Ab purified from Bioreactor Concentrate by Protein A/G. Prepared in 10mM PBS with 0.05% BSA & 0.05% azide. Also available WITHOUT BSA & azide at 1.0mg/ml.

Storage and Stability

Antibody with azide - store at 2 to 8°C. Antibody without azide - store at -20 to -80°C. Antibody is stable for 24 months. Non-hazardous. No MSDS required.

Limitations and Warranty

This antibody is available for research use only and is not approved for use in diagnosis. There are no warranties, expressed or implied, which extend beyond this description. Company is not liable for any personal injury or economic loss resulting from this product.
