

## Cytomegalovirus p65 (CMV-p65) Antibody

Mouse Monoclonal Antibody [Clone CMV100]

Catalog No	Format	Size
MSM1-100-P0	Purified Ab with BSA and Azide at 200ug/ml	20 ug
MSM1-100-P1	Purified Ab with BSA and Azide at 200ug/ml	100 ug
MSM1-100-P1ABX	Purified Ab WITHOUT BSA at 1.0mg/ml	100 ug

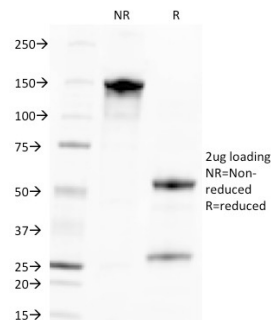
Applications	Tested Dillution	Note
--------------	------------------	------

### Product Details

<b>Clone</b>	CMV100
<b>Gene Name</b>	N/A
<b>Immunogen</b>	Recombinant CMV-p65 protein
<b>Host</b>	Mouse
<b>Clonality</b>	Monoclonal
<b>Isotype / Light Chain</b>	IgG1 / Kappa
<b>Mol. Weight of Antigen</b>	65kDa
<b>Cellular Localization</b>	N/A
<b>Species Reactivity</b>	CMV
<b>Positive Control</b>	CMV-infected cells. Tissues.

\*Optimal dilution for a specific application should be determined.

### Product Images for Cytomegalovirus p65 (CMV-p65) Antibody



SDS-PAGE Analysis of Purified CMV-p65 Mouse Monoclonal Antibody (CMV100).  
Confirmation of Purity and Integrity of Antibody.

### Specificity & Comments

Ten to forty percent of the patients with acquired immunodeficiency syndrome (AIDS) develop cytomegalovirus (CMV) infections. In some patients with AIDS, CMV is detected in the bronchoalveolar lavage fluid (BALF), urine, and other specimens, even when there are no symptoms of CMV disease. An indicator of active CMV infection is needed to facilitate the diagnosis of CMV disease in patients with AIDS or HIV infection. CMV p65 antigen was detected in the leukocytes of both the peripheral blood and BALF during the early phase of CMV disease.

### Limitations and Warranty

This antibody is available for research use only and is not approved for use in diagnosis. There are no warranties, expressed or implied, which extend beyond this description. Company is not liable for any personal injury or economic loss resulting from this product.

### Supplied As

200ug/ml of Ab Purified from Bioreactor Concentrate by Protein A/G. Prepared in 10mM PBS with 0.05% BSA & 0.05% azide. Also available WITHOUT BSA at 1.0mg/ml.

### Storage and Stability

Antibody with azide - store at 2 to 8°C. Antibody is stable for 24 months. Non-hazardous. No MSDS required.