

Golgi Complex (Marker for Human Cells) Antibody

Mouse Monoclonal Antibody [Clone 371-4]

Catalog No	Format	Size
MSM1-102-P0	Purified Ab with BSA and Azide at 200ug/ml	20 ug
MSM1-102-P1	Purified Ab with BSA and Azide at 200ug/ml	100 ug
MSM1-102-P1ABX	Purified Ab WITHOUT BSA and Azide at 1.0mg/ml	100 ug

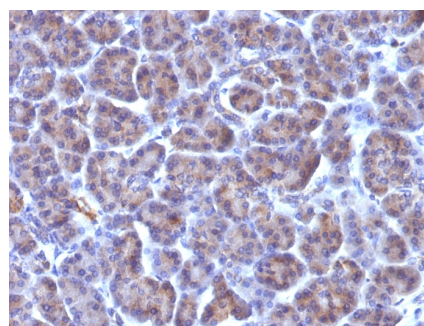
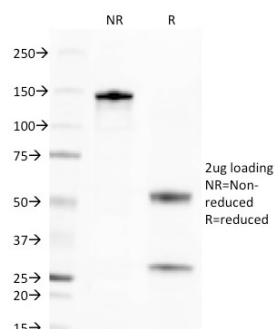
Applications	Tested Dillution	Note
Flow Cytometry (Flow)	1-2ug/million cells	
Immunofluorescence (IF)	1-3ug/ml	
Immunohistochemistry (IHC)	1-2ug/ml	30 min at RT. Staining of formalin-fixed tissues requires heating tissue sections in 10mM Tris with 1mM EDTA, pH 9.0, for 45 min at 95°C followed by cooling at RT for 20 minutes
Western Blot (WB)	2-4ug/ml	

Product Details

Clone	371-4
Gene Name	N/A
Immunogen	SU-DHL-1 large cell lymphoma cells.
Host	Mouse
Clonality	Monoclonal
Isotype / Light Chain	IgG1 / Kappa
Mol. Weight of Antigen	Not Known
Cellular Localization	Golgi apparatus
Species Reactivity	Human
Positive Control	HePG2 cells. Human pancreas.

*Optimal dilution for a specific application should be determined.

Product Images for Golgi Complex (Marker for Human Cells) Antibody



SDS-PAGE Analysis of Purified Golgi Mouse Monoclonal Antibody (371-4). Confirmation of Purity and Integrity of Antibody.

Formalin-fixed, paraffin-embedded human Pancreas stained with Golgi Mouse Monoclonal Antibody (371-4).

Specificity & Comments

This MAAb recognizes an antigen associated with the Golgi complex in human cells only. It can be used to stain the Golgi complex in cell or tissue preparations and can be used as a Golgi marker in subcellular fractions. It produces a diffuse staining pattern of the Golgi zone in normal and malignant cells. This MAAb is an excellent marker for human cells in xenographic model research. It reacts specifically with human cells. The Golgi apparatus is an organelle present in all eukaryotic cells that forms a part of the endomembrane system. The primary function of the Golgi apparatus is to process and package macromolecules synthesized by the cell for exocytosis or use within the cell. The Golgi is made up of a stack of flattened, membrane-bound sacs known as cisternae, with three functional regions: the cis face, medial region and trans face. Each region consists of various enzymes that selectively modify the macromolecules passing through them, depending on where they are destined to reside. Several spherical vesicles that have budded off of the Golgi are present surrounding the main cisternae.

Limitations and Warranty

This antibody is available for research use only and is not approved for use in diagnosis. There are no warranties, expressed or implied, which extend beyond this description. Company is not liable for any personal injury or economic loss resulting from this product.

Supplied As

200ug/ml of Ab Purified from Bioreactor Concentrate by Protein A/G. Prepared in 10mM PBS with 0.05% BSA & 0.05% azide. Also available WITHOUT BSA at 1.0mg/ml.

Storage and Stability

Antibody with azide - store at 2 to 8°C. Antibody without azide - store at -20 to -80°C. Antibody is stable for 24 months. Non-hazardous. No MSDS required.
