

## Borrelia burgdorferi (p41 Flagellin) Antibody

Mouse Monoclonal Antibody [Clone 6802]

Catalog No	Format	Size
MSM1-144-P0	Purified Ab with BSA and Azide at 200ug/ml	20 ug
MSM1-144-P1	Purified Ab with BSA and Azide at 200ug/ml	100 ug
MSM1-144-P1ABX	Purified Ab WITHOUT BSA at 1.0mg/ml	100 ug

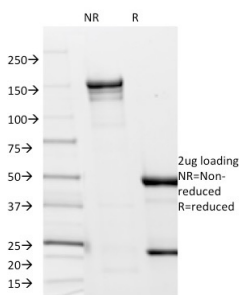
Applications	Tested Dillution	Note
Immunofluorescence (IF)	1-3ug/ml	

### Product Details

<b>Clone</b>	6802
<b>Gene Name</b>	N/A
<b>Immunogen</b>	A crude sonicate of Borrelia spirochetes
<b>Host</b>	Mouse
<b>Clonality</b>	Monoclonal
<b>Isotype / Light Chain</b>	IgG2a / Kappa
<b>Mol. Weight of Antigen</b>	~41kDa
<b>Cellular Localization</b>	N/A
<b>Species Reactivity</b>	Borrelia Burgdorferi
<b>Positive Control</b>	Borrelia burgdorferi extract or infected cells. Tissue.

\*Optimal dilution for a specific application should be determined.

### Product Images for Borrelia burgdorferi (p41 Flagellin) Antibody



SDS-PAGE Analysis of Purified Borrelia burgdorferi (p41 Flagellin) (6802).  
Confirmation of Integrity and Purity of Antibody.

### Specificity & Comments

This MAbs recognizes Borrelia burgdorferi, and is specific for the p41 flagellar antigen (Flagellin). Borrelia burgdorferi is a species of bacteria of the spirochete class of the genus Borrelia. B. Lyme disease is a vector-borne, multisystem inflammatory disease caused by the spirochete Borrelia burgdorferi, which is transmitted to humans by the bite of ticks of the Ixodes ricinus complex. B. burgdorferi is divided into at least 11 species including Borrelia burgdorferi sensu stricto. B. burgdorferi sensu stricto resides in the cerebrospinal fluid of mammals in Europe and the United States and is most often associated with Lyme arthritis. B. burgdorferi sensu stricto commonly undergoes genome-wide genetic exchange, including plasmid transfers. This frequent recombination implies a potential for rapid adaptive evolution as well as a possible polygenic basis of B. burgdorferi sensu stricto pathogenicity.

### Supplied As

200ug/ml of Ab Purified from Bioreactor Concentrate by Protein A/G. Prepared in 10mM PBS with 0.05% BSA & 0.05% azide. Also available WITHOUT BSA & azide at 1.0mg/ml.

### Storage and Stability

Antibody with azide - store at 2 to 8°C. Antibody without azide - store at -20 to -80°C. Antibody is stable for 24 months. Non-hazardous. No MSDS required.

### Limitations and Warranty

This antibody is available for research use only and is not approved for use in diagnosis. There are no warranties, expressed or implied, which extend beyond this description. Company is not liable for any personal injury or economic loss resulting from this product.

2 Union Square, Union City, CA 94587, Tel: 1-866-2-NEOBIO (1-866-263-6246)  
orders@NeoBiotechnologies.com, www.NeoBiotechnologies.com