

MHC II, Mouse Antibody

Mouse Monoclonal Antibody [Clone MK-D6]

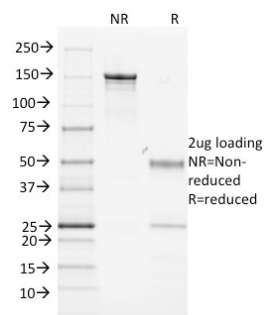
Catalog No	Format	Size
MSM1-2007-P0	Purified Ab with BSA and Azide at 200ug/ml	20 ug
MSM1-2007-P1	Purified Ab with BSA and Azide at 200ug/ml	100 ug
MSM1-2007-P1ABX	Purified Ab WITHOUT BSA and Azide at 1.0mg/ml	100 ug

Applications	Tested Dillution	Note
Flow Cytometry (Flow)	1-2ug/million cells	
Immunofluorescence (IF)	1-3ug/ml	

Product Details	
Clone	MK-D6
Gene Name	H2-Ea
Immunogen	Spleen cells from B10.D2 mice
Host	Mouse
Clonality	Monoclonal
Isotype / Light Chain	IgG2a / Kappa
Mol. Weight of Antigen	kDa
Cellular Localization	Membrane
Species Reactivity	Mouse
Positive Control	MPBMC's or Thymus.

*Optimal dilution for a specific application should be determined.

Product Images for MHC II, Mouse Antibody



SDS-PAGE Analysis of Purified MHC II Mouse Monoclonal Antibody (MK-D6).
Confirmation of Purity and Integrity of Antibody.

Specificity & Comments

The antibody is directed against Mouse major histocompatibility complex class II, I-A d. It does not react with I-Ak, I-Ab, I-As, I-Af or I-Aa.

Supplied As

200ug/ml of Ab Purified from Bioreactor Concentrate by Protein A/G. Prepared in 10mM PBS with 0.05% BSA & 0.05% azide. Also available WITHOUT BSA & azide at 1.0mg/ml.

Storage and Stability

Antibody with azide - store at 2 to 8°C. Antibody without azide - store at -20 to -80°C. Antibody is stable for 24 months. Non-hazardous. No MSDS required.

Limitations and Warranty

This antibody is available for research use only and is not approved for use in diagnosis. There are no warranties, expressed or implied, which extend beyond this description. Company is not liable for any personal injury or economic loss resulting from this product.