

NK1.1 / CD161c / Klrb1c, Mouse Antibody

Mouse Monoclonal Antibody [Clone PK136]

Catalog No	Format	Size
MSM1-2010-P0	Purified Ab with BSA and Azide at 200ug/ml	20 ug
MSM1-2010-P1	Purified Ab with BSA and Azide at 200ug/ml	100 ug
MSM1-2010-P1ABX	Purified Ab WITHOUT BSA and Azide at 1.0mg/ml	100 ug

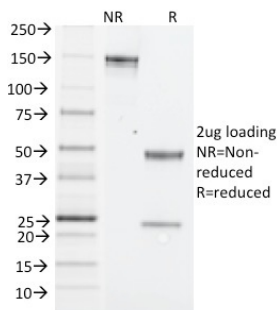
Applications	Tested Dillution	Note
Flow Cytometry (Flow)	1-2ug/million cells	
Immunofluorescence (IF)	1-3ug/ml	

Product Details

Clone	PK136
Gene Name	Klrb1c
Immunogen	CD Mouse spleen and bone marrow cells enriched for NK-1+ cells
Host	Mouse
Clonality	Monoclonal
Isotype / Light Chain	IgG2a / Kappa
Mol. Weight of Antigen	kDa
Cellular Localization	Membrane
Species Reactivity	Mouse
Positive Control	MPBMC's or Thymus or Lymph Node.

*Optimal dilution for a specific application should be determined.

Product Images for NK1.1 / CD161c / Klrb1c, Mouse Antibody



SDS-PAGE Analysis of Purified NK1.1 Mouse Monoclonal Antibody (PK136).
Confirmation of Integrity and Purity of Antibody.

Specificity & Comments

NK1.1 is a type II integral membrane glycoprotein with a C-type lectin domain and is encoded by the Klrb1c/NKR-P1C gene. It is predominantly expressed as a disulfide-linked homodimer on NK cells; however, it is also expressed on NK-T cells, a rare population of T lymphocytes. NK1.1 is expressed in some Mouse strains, including C57BL/6, FVB/N, and NZB, but not AKR, BALB/c, CBA/J, C3H, DBA/1, DBA/2, NOD, SJL, and 129. Expression of NKR-P1C antigen has been correlated with lysis of tumor cells in vitro and rejection of bone marrow allografts in vivo. NK-1.1 has also been shown to play a role in NK cell activation, IFN- production, and cytotoxic granule release. NK-1.1 is commonly used as a Mouse NK cell marker.

Limitations and Warranty

This antibody is available for research use only and is not approved for use in diagnosis. There are no warranties, expressed or implied, which extend beyond this description. Company is not liable for any personal injury or economic loss resulting from this product.

Supplied As

200ug/ml of Ab Purified from Bioreactor Concentrate by Protein A/G. Prepared in 10mM PBS with 0.05% BSA & 0.05% azide. Also available WITHOUT BSA & azide at 1.0mg/ml.

Storage and Stability

Antibody with azide - store at 2 to 8°C. Antibody without azide - store at -20 to -80°C. Antibody is stable for 24 months. Non-hazardous. No MSDS required.