

Methicillin Resistant Staphylococcus Aureus (MRSA) Antibody

Mouse Monoclonal Antibody [Clone 332/423]

Catalog No	Format	Size
MSM1-229-P0	Purified Ab with BSA and Azide at 200ug/ml	20 ug
MSM1-229-P1	Purified Ab with BSA and Azide at 200ug/ml	100 ug
MSM1-229-P1ABX	Purified Ab WITHOUT BSA at 1.0mg/ml	100 ug

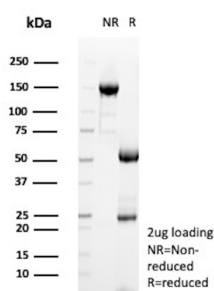
Applications	Tested Dillution	Note
Immunofluorescence (IF)	1-3ug/ml	

Product Details

Clone	332/423
Gene Name	N/A
Immunogen	Methicillin-resistant Staphylococcus aureus (MRSA)
Host	Mouse
Clonality	Monoclonal
Isotype / Light Chain	IgG2a / Kappa
Mol. Weight of Antigen	Not Known
Cellular Localization	N/A
Species Reactivity	Methicillin-resistant Staphylococcus aureus (MRSA)
Positive Control	Methicillin Resistant Staphylococcus Aureus extract or infected cells. tissue

*Optimal dilution for a specific application should be determined.

Product Images for Methicillin Resistant Staphylococcus Aureus (MRSA) Antibody



SDS-PAGE Analysis of Purified NRSA Mouse Monoclonal Antibody (332/423).
Confirmation of Purity and Integrity of Antibody.

Specificity & Comments

Staphylococcal enterotoxins represent a group of proteins, which are secreted by *Staphylococcus aureus* and cause the intoxication staphylococcal food poisoning syndrome. The illness characterized by high fever, hypotension, diarrhea, shock, and in some cases death. Their molecular masses range between 27 and 30kDa. At present, seven enterotoxins are known, namely A, B, C1, C2, C3, D and E. Their amino acid sequences have been determined and it was shown that all are single chain polypeptides containing one disulfide bond formed by two half cysteine located in the middle of the polypeptide chain, which form the so called cysteine loop. Enterotoxins are extremely potent activator of T cells, stimulating the production and secretion of various cytokines, which mediate many of the toxic effects of these substances. Enterotoxins are super antigens, inducing polyclonal T cell activation by binding to the TCR and to the alpha chain of the MHC II molecule simultaneously.

Supplied As

200ug/ml of Ab purified from Bioreactor Concentrate by Protein A/G. Prepared in 10mM PBS with 0.05% BSA & 0.05% azide. Also available WITHOUT BSA & azide at 1.0mg/ml.

Storage and Stability

Antibody with azide - store at 2 to 8°C. Antibody without azide - store at -20 to -80°C. Antibody is stable for 24 months. Non-hazardous. No MSDS required.

Limitations and Warranty

This antibody is available for research use only and is not approved for use in diagnosis. There are no warranties, expressed or implied, which extend beyond this description. Company is not liable for any personal injury or economic loss resulting from this product.
