

Cyclin A1 Antibody

Mouse Monoclonal Antibody [Clone XLA1-3]

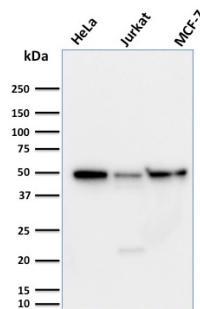
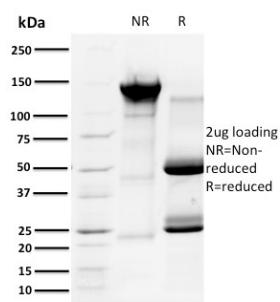
Catalog No	Format	Size
MSM1-3049-P0	Purified Ab with BSA and Azide at 200ug/ml	20 ug
MSM1-3049-P1	Purified Ab with BSA and Azide at 200ug/ml	100 ug
MSM1-3049-P1ABX	Purified Ab WITHOUT BSA and Azide at 1.0mg/ml	100 ug

Applications	Tested Dillution	Note
Western Blot (WB)	2-4ug/ml	

Product Details	
Clone	XLA1-3
Gene Name	CD79B
Immunogen	Recombinant full-length Xenopus laevis Cyclin A1 protein
Host	Mouse
Clonality	Monoclonal
Isotype / Light Chain	IgG1 / Kappa
Mol. Weight of Antigen	65kDa
Cellular Localization	Cell membrane
Species Reactivity	Xenopus Laevis
Positive Control	Very high levels in testis. Also found in myeloid leukemia cell lines. Xenopus laevis tissue lysate.

*Optimal dilution for a specific application should be determined.

Product Images for Cyclin A1 Antibody



SDS-PAGE Analysis of Purified Cyclin A1 Mouse Monoclonal Antibody (XLA1-3). Confirmation of Purity and Integrity of Antibody.

Western Blot Analysis of (1) HeLa (2) Jurkat and (3) MCF-7 cell lysates using Cyclin A1 Mouse Monoclonal Antibody (XLA1-3).

Specificity & Comments

The critical role that the family of regulatory proteins known as cyclins play in eukaryotic cell cycle regulation is well established. The best-characterized cyclin complex is the mitotic cyclin B/Cdc2 p34 kinase, the active component of maturing promoting factor. Cyclin A accumulates prior to cyclin B in the cell cycle, appears to be involved in control of S phase and has been shown to associate with cyclin-dependent kinase-2 (Cdk2). In addition, cyclin A has been implicated in cell transformation and is found in complexes with E1A, transcription factors DRTF1 and E2F, and retinoblastoma protein p110. A second form of cyclin A, named cyclin A1 because of its high sequence homology to *Xenopus* cyclin A1, is most highly expressed in germ cells. It has been proposed that cyclin A1 can associate with Cdk2, p39 and Cdc2 p34. The antibody detects *Xenopus* cyclin A in blots. Cyclin A1 is the embryonic cyclin which is present in *Xenopus* eggs. This MAb only detects *Xenopus* Cyclin A1.

Limitations and Warranty

This antibody is available for research use only and is not approved for use in diagnosis. There are no warranties, expressed or implied, which extend beyond this description. Company is not liable for any personal injury or economic loss resulting from this product.

Supplied As

200ug/ml of Ab Purified from Bioreactor Concentrate by Protein A/G. Prepared in 10mM PBS with 0.05% BSA & 0.05% azide. Also available WITHOUT BSA & azide at 1.0mg/ml.

Storage and Stability

Antibody with azide - store at 2 to 8°C. Antibody without azide - store at -20 to -80°C. Antibody is stable for 24 months. Non-hazardous. No MSDS required.
