

Cytochrome P450 3A1 / CYP3A1 Antibody

Mouse Monoclonal Antibody [Clone P6]

Catalog No	Format	Size
MSM1-3058-P0	Purified Ab with BSA and Azide at 200ug/ml	20 ug
MSM1-3058-P1	Purified Ab with BSA and Azide at 200ug/ml	100 ug
MSM1-3058-P1ABX	Purified Ab WITHOUT BSA and Azide at 1.0mg/ml	100 ug

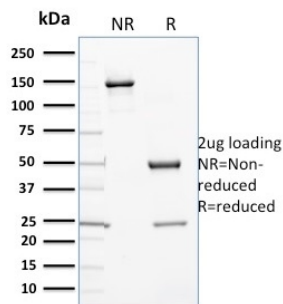
Applications	Tested Dillution	Note
Flow Cytometry (Flow)	1-2ug/million cells	
Western Blot (WB)	2-4ug/ml	

Product Details

Clone	P6
Gene Name	N/A
Immunogen	Full length protein (Rat). Rat liver cytochrome P450 3A1.
Host	Mouse
Clonality	Monoclonal
Isotype / Light Chain	IgG1 / Kappa
Mol. Weight of Antigen	51kDa
Cellular Localization	N/A
Species Reactivity	Human, Mouse, Pig, Rat
Positive Control	HeLa cells. Liver or Cardiac muscle.

*Optimal dilution for a specific application should be determined.

Product Images for Cytochrome P450 3A1 / CYP3A1 Antibody



SDS-PAGE Analysis of Purified Cytochrome P450 1A1/1A2 Mouse Monoclonal Antibody (P6). Confirmation of Purity and Integrity of Antibody.

Specificity & Comments

Cytochrome P450 oxidase (commonly abbreviated CYP) is a generic term for a large number of related, but distinct, oxidative enzymes important in vertebrate physiology. The cytochrome P450 mixed-function monooxygenase system is probably the most important element of Phase I metabolism in mammals. P450s are membrane-bound, either in the inner membrane of mitochondria or in the endoplasmic reticulum of cells where they metabolise thousands of endogenous and exogenous compounds. In the liver, these substrates include toxins, drugs, and other unneeded and potentially harmful molecules. Humans have 18 families of cytochrome P450 genes and 43 subfamilies; the CYP1 family is involved in drug metabolism and includes 3 subfamilies, 3 genes and 1 pseudogene. The CYP2 family are part of the microsomal drug metabolising system that is responsible for oxidation of many therapeutic agents as well as steroids, fatty acids and many other endogenous substances. Cytochrome P450 3A4 is abundantly expressed in liver and small intestine and is inducible by barbiturates, glucocorticoids and rifampicin. P6 is highly specific for members of the CYP 3A gene family and cross reacts with CY 3A4 in human, CYP 3A in rat and potentially CYP 3A11 (based on inducibility) in mice.

Limitations and Warranty

This antibody is available for research use only and is not approved for use in diagnosis. There are no warranties, expressed or implied, which extend beyond this description. Company is not liable for any personal injury or economic loss resulting from this product.

Supplied As

200ug/ml of Ab Purified from Bioreactor Concentrate by Protein A/G. Prepared in 10mM PBS with 0.05% BSA & 0.05% azide. Also available WITHOUT BSA & azide at 1.0mg/ml.

Storage and Stability

Antibody with azide - store at 2 to 8°C. Antibody without azide - store at -20 to -80°C. Antibody is stable for 24 months. Non-hazardous. No MSDS required.
