

Actin, Muscle Specific (Muscle Cell Marker) Antibody

Mouse Monoclonal Antibody [Clone HHF35]

| Catalog No | Format | Size |
|----------------|---|--------|
| MSM1-445-P0 | Purified Ab with BSA and Azide at 200ug/ml | 20 ug |
| MSM1-445-P1 | Purified Ab with BSA and Azide at 200ug/ml | 100 ug |
| MSM1-445-P1ABX | Purified Ab WITHOUT BSA and Azide at 1.0mg/ml | 100 ug |

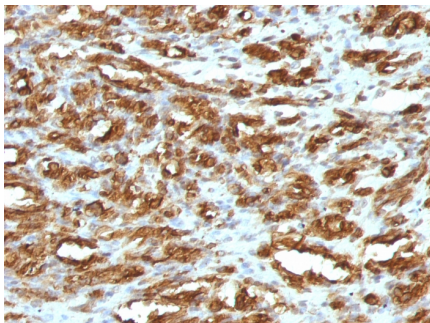
| Applications | Tested Dillution | Note |
|----------------------------|---------------------|---|
| Flow Cytometry (Flow) | 1-2ug/million cells | |
| Immunofluorescence (IF) | 1-3ug/ml | |
| Immunohistochemistry (IHC) | 1-2ug/ml | 30 min at RT. Staining of formalin-fixed tissues requires heating tissue sections in 10mM Tris with 1mM EDTA, pH 9.0, for 45 min at 95°C followed by cooling at RT for 20 minutes |

Product Details

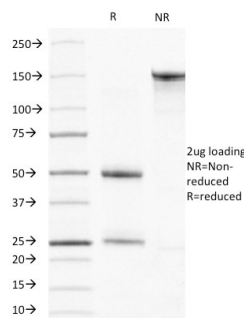
| | |
|-------------------------------|--|
| Clone | HHF35 |
| Gene Name | ACTA2 |
| Immunogen | SDS extract of human myocardium. |
| Host | Mouse |
| Clonality | Monoclonal |
| Isotype / Light Chain | IgG1 / Kappa |
| Mol. Weight of Antigen | Multiple |
| Cellular Localization | Cytoplasm, Cytoskeleton |
| Species Reactivity | Cat, Chicken, Dog, Human, Mouse, Rabbit, Rat |
| Positive Control | Muscle or sarcoma. |

*Optimal dilution for a specific application should be determined.

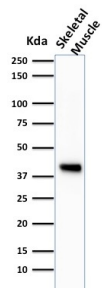
Product Images for Actin, Muscle Specific (Muscle Cell Marker) Antibody



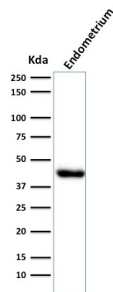
Formalin-fixed, paraffin-embedded human Rhabdomyosarcoma stained with Muscle Specific Actin Mouse Monoclonal Antibody (HHF35).



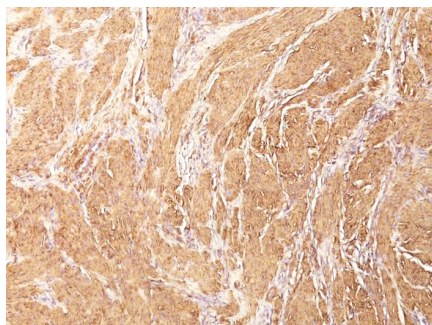
SDS-PAGE Analysis Purified Muscle Specific Actin Mouse Monoclonal Antibody (HHF35). Confirmation of Purity and Integrity of Antibody.



Western Blot Analysis of Skeletal muscle tissue lysate using Muscle Specific Actin Mouse Monoclonal Antibody (HHF35).



Western Blot Analysis of Endometrium muscle tissue lysate using Muscle Specific Actin Mouse Monoclonal Antibody (HHF35).



Formalin-fixed, paraffin-embedded human Leiomyosarcoma stained with Muscle Specific Actin Mouse Monoclonal Antibody (HHF35).

Specificity & Comments

This antibody recognizes actin of skeletal, cardiac, and smooth muscle cells. It is not reactive with other mesenchymal cells except for myoepithelium. Actin can be resolved on the basis of its isoelectric points into three distinctive components: alpha, beta, and gamma in order of increasing isoelectric point. Anti-muscle specific actin recognizes alpha and gamma isotypes of all muscle groups. Non-muscle cells such as vascular endothelial cells and connective tissues are non-reactive. Also, neoplastic cells of non-muscle-derived tissue such as carcinomas, melanomas, and lymphomas are negative. It stains tumors of smooth muscle (leiomyomas and leiomyosarcomas) as well as skeletal muscle (rhabdomyomas and rhabdomyosarcomas).

Limitations and Warranty

This antibody is available for research use only and is not approved for use in diagnosis. There are no warranties, expressed or implied, which extend beyond this description. Company is not liable for any personal injury or economic loss resulting from this product.

Supplied As

200ug/ml of Ab Purified from Bioreactor Concentrate by Protein A/G. Prepared in 10mM PBS with 0.05% BSA & 0.05% azide. Also available WITHOUT BSA & azide at 1.0mg/ml.

Storage and Stability

Antibody with azide - store at 2 to 8°C. Antibody without azide - store at -20 to -80°C. Antibody is stable for 24 months. Non-hazardous. No MSDS required.