

## HCG Holo (Pregnancy & Choriocarcinoma Marker) Antibody

Mouse Monoclonal Antibody [Clone HCGab/52]

Catalog No	Format	Size
MSM1-52-P0	Purified Ab with BSA and Azide at 200ug/ml	20 ug
MSM1-52-P1	Purified Ab with BSA and Azide at 200ug/ml	100 ug
MSM1-52-P1ABX	Purified Ab WITHOUT BSA and Azide at 1.0mg/ml	100 ug

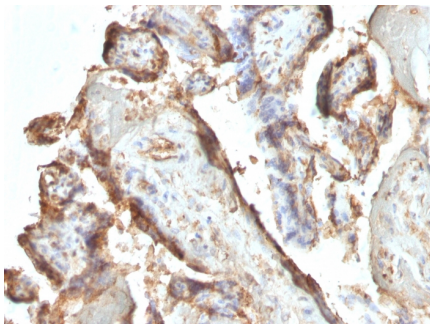
Applications	Tested Dillution	Note
Immunohistochemistry (IHC)	1-2ug/ml	30 min at RT. Staining of formalin-fixed tissues requires heating tissue sections in 10mM Tris with 1mM EDTA, pH 9.0, for 45 min at 95°C followed by cooling at RT for 20 minutes

### Product Details

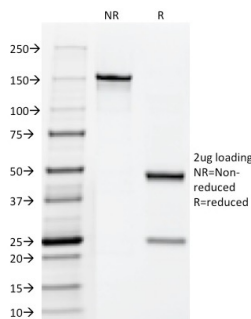
Clone	HCGab/52
Gene Name	CGA
Immunogen	Purified hCG protein
Host	Mouse
Clonality	Monoclonal
Isotype / Light Chain	IgG1 / Kappa
Mol. Weight of Antigen	~35kDa (intact hCG)
Cellular Localization	Secreted
Species Reactivity	Human
Positive Control	JAR or TT cells. Placenta.

*\*Optimal dilution for a specific application should be determined.*

### Product Images for HCG Holo (Pregnancy & Choriocarcinoma Marker) Antibody



Formalin-fixed, paraffin-embedded human Placenta stained with hCG Mouse Monoclonal Antibody (HCGab/52)



SDS-PAGE Analysis of Purified hCG Mouse Monoclonal Antibody (HCGab/52). Confirmation of Purity and Integrity of Antibody.

### **Specificity & Comments**

This MAb is a very special because it reacts ONLY with the intact-HCG and not with either free alpha- or free beta-chain of HCG. HCG is a glycoprotein and is composed of two non-identical, non-covalently linked polypeptide chains designated as the subunit is identical to that of thyroid stimulating hormone (TSH) follicle stimulating hormone (FSH), and luteinizing hormone (LH). HCG is secreted in large quantities by normal trophoblasts. It is present only in trace amounts in non-pregnant urine and sera but rises sharply during pregnancy. HCG MAb detects cells and tumors of trophoblastic origin such as choriocarcinoma. Large cell carcinoma and adenocarcinoma of the lung demonstrate anti-hCG positivity in 90% and 60% of cases respectively. 20% of lung squamous cell carcinomas are positive. HCG expression by non-trophoblastic tumors may indicate aggressive behavior.

---

### **Limitations and Warranty**

This antibody is available for research use only and is not approved for use in diagnosis. There are no warranties, expressed or implied, which extend beyond this description. Company is not liable for any personal injury or economic loss resulting from this product.

---

### **Supplied As**

200ug/ml of Ab Purified from Bioreactor Concentrate by Protein A/G. Prepared in 10mM PBS with 0.05% BSA & 0.05% azide. Also available WITHOUT BSA & azide at 1.0mg/ml.

---

### **Storage and Stability**

Antibody with azide - store at 2 to 8°C. Antibody without azide - store at -20 to -80°C. Antibody is stable for 24 months. Non-hazardous. No MSDS required.

---

### **Research Areas**

Signal Transduction, Transcription Factors

---