

## Hepatocyte Specific Antigen (Hepatocellular Marker) Antibody

Mouse Monoclonal Antibody [Clone OCH1E5]

Catalog No	Format	Size
MSM1-671-P0	Purified Ab with BSA and Azide at 200ug/ml	20 ug
MSM1-671-P1	Purified Ab with BSA and Azide at 200ug/ml	100 ug
MSM1-671-P1ABX	Purified Ab WITHOUT BSA and Azide at 1.0mg/ml	100 ug

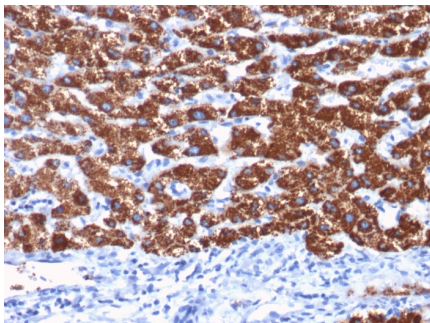
Applications	Tested Dillution	Note
Immunofluorescence (IF)	1-3ug/ml	
Immunohistochemistry (IHC)	1-2ug/ml	30 min at RT. Staining of formalin-fixed tissues requires heating tissue sections in 10mM Tris with 1mM EDTA, pH 9.0, for 45 min at 95°C followed by cooling at RT for 20 minutes

### Product Details

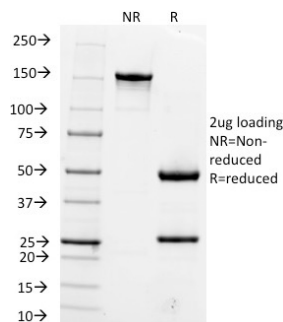
<b>Clone</b>	OCH1E5
<b>Immunogen</b>	Extract of a formalin-fixed, rejected-allograft of a human liver
<b>Host</b>	Mouse
<b>Clonality</b>	Monoclonal
<b>Isotype / Light Chain</b>	IgG1 / Kappa
<b>Mol. Weight of Antigen</b>	Not Known
<b>Cellular Localization</b>	N/A
<b>Species Reactivity</b>	Dog, Human
<b>Positive Control</b>	Liver or Hepatocellular Carcinoma (HCC).

*\*Optimal dilution for a specific application should be determined.*

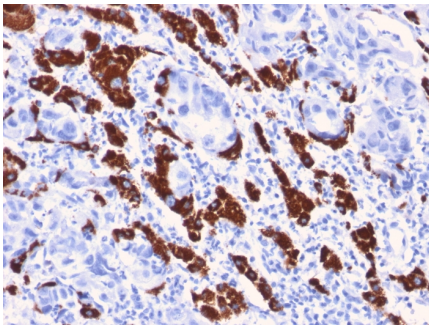
### Product Images for Hepatocyte Specific Antigen (Hepatocellular Marker) Antibody



Formalin-fixed, paraffin-embedded human Hepatocellular Carcinoma stained with Hepatocyte Specific Antigen Mouse Monoclonal Antibody (OCH1E5).



SDS-PAGE Analysis of Purified Hepatocyte Specific Antigen Mouse Monoclonal Antibody (OCH1E5). Confirmation of Purity and Integrity of Antibody.



Formalin-fixed, paraffin-embedded human Liver stained with Hepatocyte Specific Antigen Mouse Monoclonal Antibody (OCH1E5).

---

### Specificity & Comments

Hepatocyte Specific Antigen, also called Hepatocyte Paraffin 1 or HepPar1, localizes to the mitochondria of hepatocytes. It is a sensitive marker for distinguishing hepatocellular carcinomas (HCC) from other metastatic carcinomas as well as cholangio-carcinomas. HCC's occur primarily in the stomach, but they are also found in many other organs. The Hepatocyte Specific Antigen may also be a useful marker for intestinal metaplasia. Reportedly, strong expression of the Hepatocyte Specific Antigen correlates with smaller tumor size and longer patient survival. Occasionally, Hepatocyte Specific Antigen is also found in gastric carcinomas as well as in a few other non-hepatic tumors.

---

### Limitations and Warranty

This antibody is available for research use only and is not approved for use in diagnosis. There are no warranties, expressed or implied, which extend beyond this description. Company is not liable for any personal injury or economic loss resulting from this product.

---

### Supplied As

200ug/ml of Ab Purified from Bioreactor Concentrate by Protein A/G. Prepared in 10mM PBS with 0.05% BSA & 0.05% azide. Also available WITHOUT BSA & azide at 1.0mg/ml.

---

### Storage and Stability

Antibody with azide - store at 2 to 8°C. Antibody without azide - store at -20 to -80°C. Antibody is stable for 24 months. Non-hazardous. No MSDS required.

---