

Mitochondria (Marker for Human Cells, Granular RCC s & Salivary Tumor Antibody

Mouse Monoclonal Antibody [Clone 113-1]

Catalog No	Format	Size
MSM1-739-P0	Purified Ab with BSA and Azide at 200ug/ml	20 ug
MSM1-739-P1	Purified Ab with BSA and Azide at 200ug/ml	100 ug
MSM1-739-P1ABX	Purified Ab WITHOUT BSA and Azide at 1.0mg/ml	100 ug

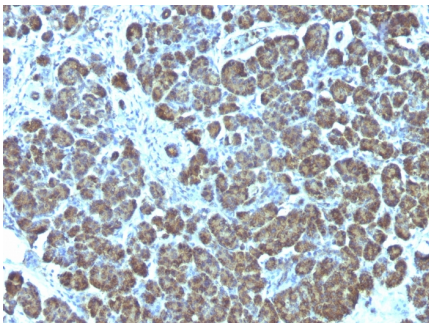
Applications	Tested Dillution	Note
Immunofluorescence (IF)	1-3ug/ml	
Immunohistochemistry (IHC)	1-2ug/ml	30 min at RT. Staining of formalin-fixed tissues requires heating tissue sections in 10mM Tris with 1mM EDTA, pH 9.0, for 45 min at 95°C followed by cooling at RT for 20 minutes
Western Blot (WB)	2-4ug/ml	

Product Details

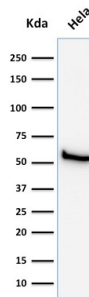
Clone	113-1
Gene Name	N/A
Immunogen	Semi-Purified mitochondrial preparation
Host	Mouse
Clonality	Monoclonal
Isotype / Light Chain	IgG1 / Kappa
Mol. Weight of Antigen	60kDa
Cellular Localization	N/A
Species Reactivity	Human
Positive Control	HeLa or HepG2 cells. Hepatocellular carcinoma.

*Optimal dilution for a specific application should be determined.

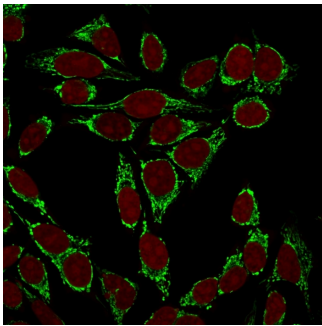
Product Images for Mitochondria (Marker for Human Cells, Granular RCC s & Salivary Tumor Antibody



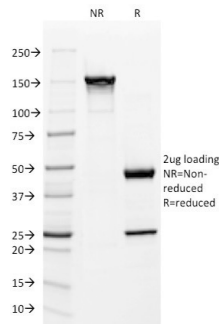
Formalin-fixed, paraffin-embedded human Pancreas stained with Mitochondria Mouse Monoclonal Antibody (113-1).



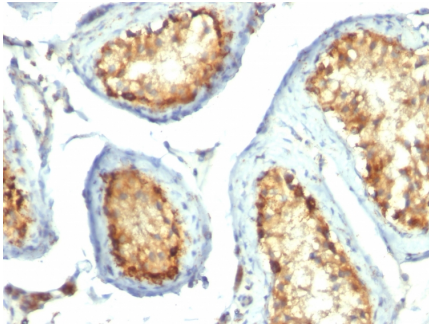
Western Blot analysis of HeLa cell lysate using Mitochondria Mouse Monoclonal Antibody (113-1).



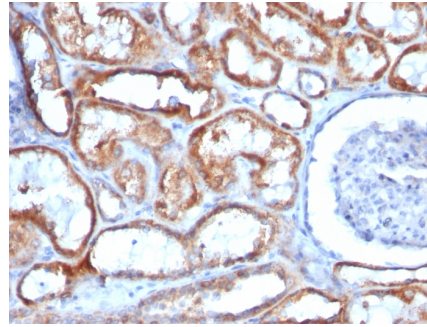
Confocal immunofluorescence image of HeLa cells using Mitochondria Mouse Monoclonal Antibody (113-1) labeled is Green (CF488) and Reddot is used to label the nuclei Red.



SDS-PAGE Analysis Purified Mitochondria Mouse Monoclonal Antibody (113-1). Confirmation of Integrity and Purity of Antibody.



Formalin-fixed, paraffin-embedded human Testicular Carcinoma stained with Mitochondria Mouse Monoclonal Antibody (113-1).



Formalin-fixed, paraffin-embedded human Renal Cell Carcinoma stained with Mitochondria Mouse Monoclonal Antibody (113-1).

Specificity & Comments

This MAb recognizes a 60kDa antigen associated with the mitochondria in human cells. It can be used to stain mitochondria in cell or tissue preparations and can be used as a mitochondrial marker in subcellular fractions. It produces a spaghetti-like pattern in normal and malignant cells. This antibody is an excellent marker for human cells in xenographic model research. It reacts specifically with human cells, including neurons and embryonic stem cells. Immunostaining pattern with anti-mitochondrial MAb has been reported as a useful discriminatory adjunct in the complex differential diagnosis of granular renal cell tumors. Reportedly, this MAb facilitates the classification of salivary tumors.

Limitations and Warranty

This antibody is available for research use only and is not approved for use in diagnosis. There are no warranties, expressed or implied, which extend beyond this description. Company is not liable for any personal injury or economic loss resulting from this product.

Supplied As

200ug/ml of Ab Purified from Bioreactor Concentrate by Protein A/G. Prepared in 10mM PBS with 0.05% BSA & 0.05% azide. Also available WITHOUT BSA at 1.0mg/ml.

Storage and Stability

Antibody with azide - store at 2 to 8°C. Antibody is stable for 24 months. Non-hazardous. No MSDS required.