

## Cytokeratin 7/17 Antibody

Mouse Monoclonal Antibody [Clone C-46]

Catalog No	Format	Size
MSM14-949-P0	Purified Ab with BSA and Azide at 200ug/ml	20 ug
MSM14-949-P1	Purified Ab with BSA and Azide at 200ug/ml	100 ug
MSM14-949-P1ABX	Purified Ab WITHOUT BSA and Azide at 1.0mg/ml	100 ug

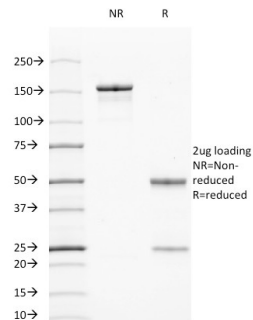
Applications	Tested Dillution	Note
Flow Cytometry (Flow)	1-2ug/million cells	
Immunofluorescence (IF)	1-3ug/ml	
Immunohistochemistry (IHC)	1-2ug/ml	30 min at RT. Staining of formalin-fixed tissues requires heating tissue sections in 10mM Tris with 1mM EDTA, pH 9.0, for 45 min at 95°C followed by cooling at RT for 20 minutes
Western Blot (WB)	2-4ug/ml	

### Product Details

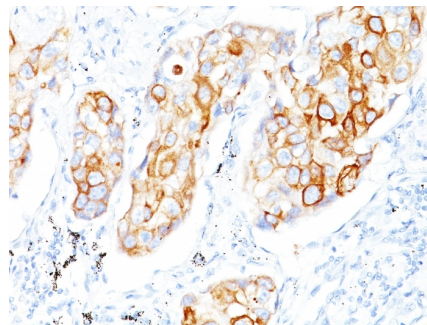
<b>Clone</b>	C-46
<b>Gene Name</b>	KRT7
<b>Immunogen</b>	Cytoskeletal preparation from HeLa cells (human cervical carcinoma cells)
<b>Host</b>	Mouse
<b>Clonality</b>	Monoclonal
<b>Isotype / Light Chain</b>	IgG1 / Kappa
<b>Mol. Weight of Antigen</b>	55kDa (CK7); 46kDa (CK17)
<b>Cellular Localization</b>	Cytoplasm
<b>Species Reactivity</b>	Cow, Human
<b>Positive Control</b>	HeLa or ME-180 cells. Skin or hepatocellular carcinoma.

\*Optimal dilution for a specific application should be determined.

### Product Images for Cytokeratin 7/17 Antibody



SDS-PAGE Analysis of Purified Cytokeratin 7/17 Mouse Monoclonal Antibody (C-46). Confirmation of Purity and Integrity of Antibody.



Formalin-fixed, paraffin-embedded human Lung SCC stained with Cytokeratin 7/17 Mouse Monoclonal Antibody (C-46).

### **Specificity & Comments**

It recognizes intermediate filament proteins (IFP's) of 55kDa and 46kDa, which are identified as cytokeratin 7 and Cytokeratin 17 respectively. On formalin-fixed, paraffin embedded sections, C-46 reacts with keratin 7 only. Cytokeratins comprise a diverse group of intermediate filament proteins (IFPs) that are expressed as pairs in both keratinized and non-keratinized epithelial tissue. Cytokeratins play a critical role in differentiation and tissue specialization and function to maintain the overall structural integrity of epithelial cells. Cytokeratins have been found to be useful markers of tissue differentiation, which is directly applicable to the characterization of malignant tumors. Cytokeratin 7 is a basic cytokeratin, which is found in most glandular and transitional epithelia but not in the stratified squamous epithelia. Cytokeratin 7 is expressed in the epithelial cells of ovary, lung, and breast but not of colon, prostate, or gastrointestinal tract. Cytokeratin 17 is expressed in epithelial cells of various origins, such as bronchial epithelial cells and skin appendages. Cytokeratin 17 antibody marks basal cell differentiation.

---

### **Limitations and Warranty**

This antibody is available for research use only and is not approved for use in diagnosis. There are no warranties, expressed or implied, which extend beyond this description. Company is not liable for any personal injury or economic loss resulting from this product.

---

### **Supplied As**

200ug/ml of Ab Purified from Bioreactor Concentrate by Protein A/G. Prepared in 10mM PBS with 0.05% BSA & 0.05% azide. Also available WITHOUT BSA & azide at 1.0mg/ml.

---

### **Storage and Stability**

Antibody with azide - store at 2 to 8°C. Antibody without azide - store at -20 to -80°C. Antibody is stable for 24 months. Non-hazardous. No MSDS required.

---