

CA19-9/Sialyl Lewis_a (GI Tumor Marker) Antibody

Mouse Monoclonal Antibody [Clone SPM588]

Catalog No	Format	Size
MSM1X-25-P0	Purified Ab with BSA and Azide at 200ug/ml	20 ug
MSM1X-25-P1	Purified Ab with BSA and Azide at 200ug/ml	100 ug
MSM1X-25-P1BX	Purified Ab WITHOUT BSA at 1.0mg/ml	100 ug

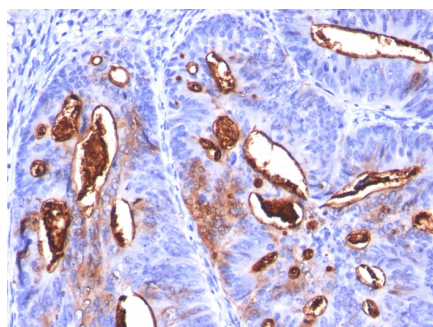
Applications	Tested Dillution	Note
Flow Cytometry (Flow)	1-2ug/million cells	
Immunofluorescence (IF)	1-3ug/ml	
Immunohistochemistry (IHC)	1-2ug/ml	30 min at RT. Staining of formalin-fixed tissues requires heating tissue sections in 10mM Tris with 1mM EDTA, pH 9.0, for 45 min at 95°C followed by cooling at RT for 20 minutes

Product Details

Clone	SPM588
Immunogen	Precipitin lines obtained after immuno-diffusion using MAb 116-NS-19-9 and mucins isolated from an ovarian cyst of a Lewis A+B- patient (OLe).
Host	Mouse
Clonality	Monoclonal
Isotype / Light Chain	IgM / Kappa
Mol. Weight of Antigen	>400kDa
Cellular Localization	N/A
Species Reactivity	Human
Positive Control	Stomach.

**Optimal dilution for a specific application should be determined.*

Product Images for CA19-9/Sialyl Lewis_a (GI Tumor Marker) Antibody



Formalin-fixed, paraffin-embedded human Colon Carcinoma stained with CA19-9 Monoclonal Antibody (SPM588).

Specificity & Comments

CA19-9, a carbohydrate epitope expressed on a high MW (400kDa) mucin glycoprotein, is a sialyl Lewis structure which is synthesized from type 1 blood group precursor chains and is present in individuals expressing the Lewis and/or Lewis blood group antigens. In normal tissues, sialyl Lewis antigen is present in ductal epithelium of the breast, kidney, salivary gland, and sweat glands. Its expression is greatly enhanced in serum as well as in the majority of tumor cells in gastrointestinal (GI) carcinomas, including adenocarcinomas of the stomach, intestine, and pancreas. Preoperative elevated CA19-9 levels in patients with stage I pancreatic carcinoma decrease to normal values following surgery. When used serially, CA19-9 can predict recurrence of disease prior to radiographic or clinical findings. This MAb is superb for staining of formalin-fixed, paraffin-embedded tissues.

Limitations and Warranty

This antibody is available for research use only and is not approved for use in diagnosis. There are no warranties, expressed or implied, which extend beyond this description. Company is not liable for any personal injury or economic loss resulting from this product.

Supplied As

200ug/ml of Ab Purified from Bioreactor Concentrate. Prepared in 10mM PBS with 0.05% BSA & 0.05% azide. Also available WITHOUT BSA at 1.0mg/ml.

Storage and Stability

Antibody with azide - store at 2 to 8°C. Antibody without azide - store at -20 to -80°C. Antibody is stable for 24 months. Non-hazardous. No MSDS required.
