

Small Cell Lung Carcinoma Antigen (SCLC Marker) Antibody

Mouse Monoclonal Antibody [Clone MOC-52]

Catalog No	Format	Size
MSM2-329-P0	Purified Ab with BSA and Azide at 200ug/ml	20 ug
MSM2-329-P1	Purified Ab with BSA and Azide at 200ug/ml	100 ug
MSM2-329-P1ABX	Purified Ab WITHOUT BSA and Azide at 1.0mg/ml	100 ug

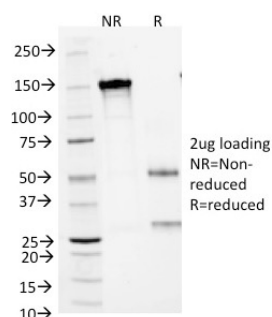
Applications	Tested Dillution	Note
Immunofluorescence (IF)	1-3ug/ml	

Product Details

Clone	MOC-52
Gene Name	N/A
Immunogen	Lung Cancer-associated antigen isolated from small cell lung carcinoma-derived cell line
Host	Mouse
Clonality	Monoclonal
Isotype / Light Chain	IgG1 / Kappa
Mol. Weight of Antigen	145kDa
Cellular Localization	N/A
Species Reactivity	Human
Positive Control	adrenal gland., Human small cell lung carcinoma

*Optimal dilution for a specific application should be determined.

Product Images for Small Cell Lung Carcinoma Antigen (SCLC Marker) Antibody



SDS-PAGE Analysis of Purified SCLC Mouse Monoclonal Antibody (MOC-52).
Confirmation of Purity and Integrity of Antibody.

Specificity & Comments

This MAbs reacts with a membrane-associated protein present in normal and malignant neuroendocrine tissues including small cell lung cancer (SCLC). It stains neural and a variable number of endocrine tissues and in the lung it reacts preferentially with SCLC and carcinoids. Its epitope is destroyed during formalin fixation. This antibody was categorized during the First International Workshop on Small Cell Lung Cancer Antigens held in London in April 1987. There are two major types of Lung Carcinoma: non-small cell, which accounts for 80% of all cases; and small cell, which accounts for roughly 20% of all lung cancers reported. The lung continues to be a customary place for cancer migration from tumors elsewhere in the body. Treatment depends on the specific cell type of the cancer, level of progression and status of the individual patient.

Supplied As

200ug/ml of Ab Purified from Bioreactor Concentrate by Protein A/G. Prepared in 10mM PBS with 0.05% BSA & 0.05% azide. Also available WITHOUT BSA & azide at 1.0mg/ml.

Storage and Stability

Antibody with azide - store at 2 to 8°C. Antibody without azide - store at -20 to -80°C. Antibody is stable for 24 months. Non-hazardous. No MSDS required.

Limitations and Warranty

This antibody is available for research use only and is not approved for use in diagnosis. There are no warranties, expressed or implied, which extend beyond this description. Company is not liable for any personal injury or economic loss resulting from this product.