

Recombinant HLA-Pan (MHC II) Antibody

Mouse Monoclonal Antibody [Clone rHLA-Pan/3475]

Catalog No	Format	Size
MSM2-3475-P0	Purified Ab with BSA and Azide at 200ug/ml	20 ug
MSM2-3475-P1	Purified Ab with BSA and Azide at 200ug/ml	100 ug
MSM2-3475-P1ABX	Purified Ab WITHOUT BSA and Azide at 1.0mg/ml	100 ug

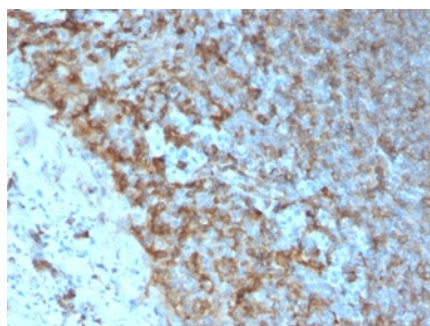
Applications	Tested Dillution	Note
Flow Cytometry (Flow)	1-2ug/million cells	
Immunofluorescence (IF)	1-3ug/ml	
Immunohistochemistry (IHC)	1-2ug/ml	30 min at RT. Staining of formalin-fixed tissues requires heating tissue sections in 10mM Tris with 1mM EDTA, pH 9.0, for 45 min at 95°C followed by cooling at RT for 20 minutes
Western Blot (WB)	2-4ug/ml	

Product Details

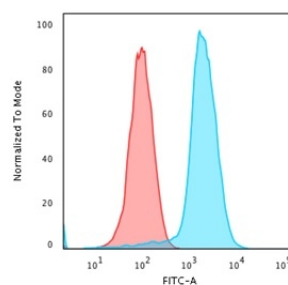
Clone	rHLA-Pan/3475
Gene Name	HLA-DPB1
Immunogen	Non-T, non-B human acute lymphoblastic leukemia REH6 cells
Host	Mouse
Clonality	Monoclonal
Isotype / Light Chain	IgG1 / Kappa
Mol. Weight of Antigen	33-35kDa
Cellular Localization	Cell membrane, Endoplasmic reticulum membrane, Endosome membrane, Golgi apparatus, Lysosome membrane, trans-Golgi network membrane
Species Reactivity	Human
Positive Control	Raji cells. Human tonsil or lymph node.

*Optimal dilution for a specific application should be determined.

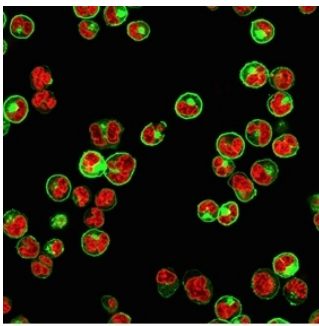
Product Images for Recombinant HLA-Pan (MHC II) Antibody



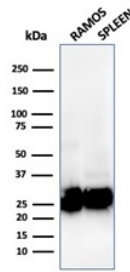
Formalin-fixed, paraffin-embedded human tonsil stained with HLA-Pan Mouse Recombinant Monoclonal Antibody (rHLA-Pan/3475).



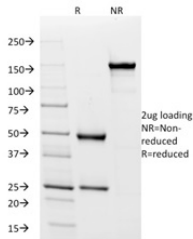
Flow Cytometric Analysis of human Raji cells. HLA-Pan Mouse Recombinant Monoclonal Antibody (rHLA-Pan/3475) followed by goat anti-mouse IgG-CF488 (blue); isotype control (red).



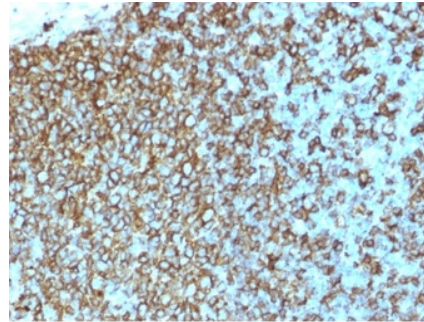
Immunofluorescence Analysis of human Raji cells. HLA-Pan Mouse Recombinant Monoclonal Antibody (rHLA-Pan/3475) followed by goat anti-mouse IgG-CF488 (green). Nuclear counterstain is RedDot.



Western Blot Analysis of (1) Ramos cell and (2) human spleen tissue lysate using HLA-Pan Mouse Recombinant Monoclonal Antibody (rHLA-Pan/3475).



SDS-PAGE Analysis Purified HLA-Pan Mouse Recombinant Monoclonal (rHLA-Pan/3475). Confirmation of Purity and Integrity of Antibody.



Formalin-fixed, paraffin-embedded human tonsil stained with HLA-Pan Mouse Recombinant Monoclonal Antibody (rHLA-Pan/3475).

Specificity & Comments

Reacts with a common epitope of human major histocompatibility (MHC) class II antigens, HLA-DP, -DQ and -DR. Human MHC class II antigens are transmembrane glycoproteins composed of an alpha chain (36kDa) and a beta chain (27kDa). They are expressed primarily on antigen presenting cells such as B lymphocytes, monocytes, macrophages, and thymic epithelial cells and are also present on activated T lymphocytes. Human MHC class II genes are located in the HLA-D region that encodes at least six alpha and ten beta chain genes. Three loci, DR, DQ and DP, encode the major expressed products of the human class II region. The human MHC class II molecules bind intracellularly processed peptides and present them to T-helper cells. They, therefore, have a critical role in the initiation of the immune response.

Limitations and Warranty

This antibody is available for research use only and is not approved for use in diagnosis. There are no warranties, expressed or implied, which extend beyond this description. Company is not liable for any personal injury or economic loss resulting from this product.

Supplied As

200ug/ml of Ab purified from Bioreactor Concentrate by Protein A/G. Prepared in 10mM PBS with 0.05% BSA & 0.05% azide. Also available WITHOUT BSA & azide at 1.0mg/ml.

Storage and Stability

Antibody with azide - store at 2 to 8 °C. Antibody without azide - store at -20 to -80 °C. Antibody is stable for 24 months. Non-hazardous. No MSDS required.

Research Areas

Immunology