

## Myeloid Cell Marker (Macrophage / Granulocyte Marker) Antibody

Mouse Monoclonal Antibody [Clone SPM250]

Catalog No	Format	Size
MSM2X-62-P0	Purified Ab with BSA and Azide at 200ug/ml	20 ug
MSM2X-62-P1	Purified Ab with BSA and Azide at 200ug/ml	100 ug
MSM2X-62-P1ABX	Purified Ab WITHOUT BSA and Azide at 1.0mg/ml	100 ug

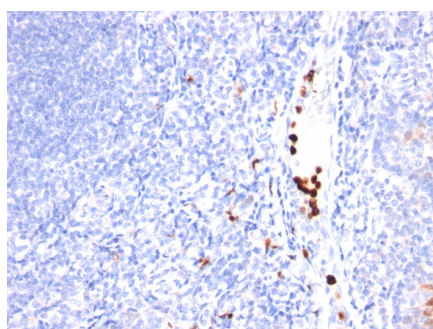
Applications	Tested Dillution	Note
Flow Cytometry (Flow)	1-2ug/million cells	
Immunofluorescence (IF)	1-3ug/ml	
Immunohistochemistry (IHC)	1-2ug/ml	30 min at RT. Staining of formalin-fixed tissues requires heating tissue sections in 10mM Tris with 1mM EDTA, pH 9.0, for 45 min at 95°C followed by cooling at RT for 20 minutes

### Product Details

<b>Clone</b>	SPM250
<b>Immunogen</b>	Nuclei from pokeweed mitogen stimulated human peripheral blood lymphocytes.
<b>Host</b>	Mouse
<b>Clonality</b>	Monoclonal
<b>Isotype / Light Chain</b>	IgG1 / Kappa
<b>Mol. Weight of Antigen</b>	Unknown
<b>Cellular Localization</b>	N/A
<b>Species Reactivity</b>	Human, Macaque Monkey
<b>Positive Control</b>	Tonsil or lymph node

\*Optimal dilution for a specific application should be determined.

### Product Images for Myeloid Cell Marker (Macrophage / Granulocyte Marker) Antibody



Formalin-fixed, paraffin-embedded human Tonsil stained with Granulocyte Monoclonal Antibody (SPM250).

### Specificity & Comments

Recognizes an unidentified antigen in the cytoplasm of mature granulocytes. It shows no reactivity with any other cell type in human tissues. Markers of myeloid cells are useful in the identification of different levels of cellular differentiation. MAb BM-2 reacts with early precursor and mature forms of human myeloid cells. This MAb is useful for the detection of myeloid leukemias and granulocytic sarcomas. It can be used as a marker of granulocytes in normal tissues or inflammatory processes.

### Supplied As

200ug/ml of Ab Purified from Bioreactor Concentrate by Protein A/G. Prepared in 10mM PBS with 0.05% BSA & 0.05% azide. Also available WITHOUT BSA & azide at 1.0mg/ml.

### Storage and Stability

Antibody with azide - store at 2 to 8°C. Antibody without azide - store at -20 to -80°C. Antibody is stable for 24 months. Non-hazardous. No MSDS required.

### Limitations and Warranty

This antibody is available for research use only and is not approved for use in diagnosis. There are no warranties, expressed or implied, which extend beyond this description. Company is not liable for any personal injury or economic loss resulting from this product.