

## Epstein-Barr Virus (LMP-1) Antibody

Mouse Monoclonal Antibody [Clone CS2]

Catalog No	Format	Size
MSM3-1742-P0	Purified Ab with BSA and Azide at 200ug/ml	20 ug
MSM3-1742-P1	Purified Ab with BSA and Azide at 200ug/ml	100 ug
MSM3-1742-P1ABX	Purified Ab WITHOUT BSA and Azide at 1.0mg/ml	100 ug

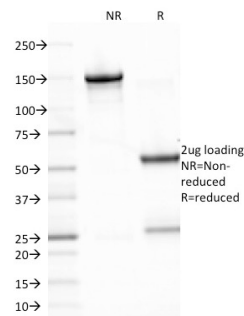
Applications	Tested Dillution	Note
Western Blot (WB)	2-4ug/ml	

### Product Details

<b>Clone</b>	CS2
<b>Gene Name</b>	N/A
<b>Immunogen</b>	Recombinant fusion protein containing the sequence of bacterial beta-galactosidase and the carboxyl half of EBV-encoded LMP
<b>Host</b>	Mouse
<b>Clonality</b>	Monoclonal
<b>Isotype / Light Chain</b>	IgG1 / Kappa
<b>Mol. Weight of Antigen</b>	60kDa
<b>Cellular Localization</b>	N/A
<b>Species Reactivity</b>	EBV
<b>Positive Control</b>	EBV-infected cells. Tissues.

\*Optimal dilution for a specific application should be determined.

### Product Images for Epstein-Barr Virus (LMP-1) Antibody



SDS-PAGE Analysis of Purified EBV Mouse Monoclonal Antibody (CS2). Confirmation of Integrity and Purity of Antibody.

### Specificity & Comments

This antibody is a mixture of four different monoclonal antibodies. This antibody is specific to 60kDa latent membrane protein (LMP-1) encoded by the BNLF1 gene of the EBV. Each clone reacts with different epitopes on the hydrophilic C-terminus of the cytoplasmic domain of LMP-1. This antibody stains strongly with EBV-positive lymphoblastoid cell lines and EBV infected B cell immunoblasts in infectious mononucleosis. EBV, also designated human herpesvirus 4 (HHV-4), is a member of the herpesvirus family and is one of the most common human viruses. EBV infects B cells and, though often asymptomatic, it can cause infectious mononucleosis, a disease characterized by fatigue, fever, sore throat and muscle soreness.

### Limitations and Warranty

This antibody is available for research use only and is not approved for use in diagnosis. There are no warranties, expressed or implied, which extend beyond this description. Company is not liable for any personal injury or economic loss resulting from this product.

### Supplied As

200ug/ml of Ab Purified from Bioreactor Concentrate by Protein A/G. Prepared in 10mM PBS with 0.05% BSA & 0.05% azide. Also available WITHOUT BSA & azide at 1.0mg/ml.

### Storage and Stability

Antibody with azide - store at 2 to 8°C. Antibody without azide - store at -20 to -80°C. Antibody is stable for 24 months. Non-hazardous. No MSDS required.