

Recombinant Cytokeratin, Basic (Type II or HMW) Antibody

Mouse Monoclonal Antibody [Clone rKRTH/2148]

Catalog No	Format	Size
MSM32-2148-P0	Purified Ab with BSA and Azide at 200ug/ml	20 ug
MSM32-2148-P1	Purified Ab with BSA and Azide at 200ug/ml	100 ug
MSM32-2148-P1ABX	Purified Ab WITHOUT BSA and Azide at 1.0mg/ml	100 ug

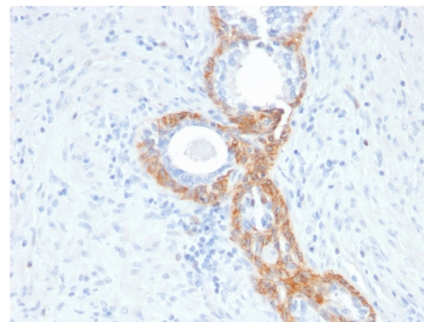
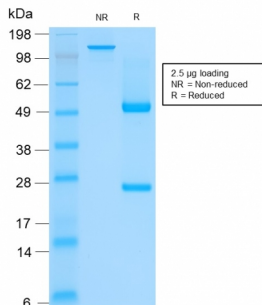
Applications	Tested Dillution	Note
Immunohistochemistry (IHC)	1-2ug/ml	30 min at RT. Staining of formalin-fixed tissues requires heating tissue sections in 10mM Tris with 1mM EDTA, pH 9.0, for 45 min at 95°C followed by cooling at RT for 20 minutes

Product Details

Clone	rKRTH/2148
Gene Name	KRT76
Immunogen	Solubilized keratin extract from human stratum corneum
Host	Mouse
Clonality	Monoclonal
Isotype / Light Chain	IgG1 / Kappa
Mol. Weight of Antigen	50-67kDa
Species Reactivity	Human, Mouse, Rat
Positive Control	PC12 cells, Prostate carcinoma., Skin

*Optimal dilution for a specific application should be determined.

Product Images for Recombinant Cytokeratin, Basic (Type II or HMW) Antibody



SDS-PAGE Analysis of Purified CK HMW Mouse Recombinant Monoclonal Antibody (rKRTH/2148). Confirmation of Integrity and Purity of Antibody.

Formalin-fixed, paraffin-embedded human Prostate Carcinoma stained with CK HMW Mouse Recombinant Monoclonal Antibody (rKRTH/2148).

Specificity & Comments

This antibody recognizes CK1, CK5, CK10 and CK14. In normal epithelia, it stains stratified epithelia, myoepithelial cells and basal cells in the prostate gland and bronchi. This MAb shows no reactivity with hepatocytes, pancreatic acinar cells, proximal renal tubules, or endometrial glands; there is no reactivity with cells derived from simple epithelia. Mesenchymal tumors, lymphomas, melanomas, neural tumors, and neuroendocrine tumors are negative with this antibody. It stains myoepithelial cells and has been shown to be useful in distinguishing prostate adenocarcinoma from benign prostate. This antibody has also been useful in separating benign from malignant intraductal breast proliferations.

Supplied As

200ug/ml of Ab Purified from Bioreactor Concentrate by Protein A/G. Prepared in 10mM PBS with 0.05% BSA & 0.05% azide. Also available WITHOUT BSA & azide at 1.0mg/ml.

Storage and Stability

Antibody with azide - store at 2 to 8°C. Antibody without azide - store at -20 to -80°C. Antibody is stable for 24 months. Non-hazardous. No MSDS required.

Research Areas

Developmental Biology

Limitations and Warranty

This antibody is available for research use only and is not approved for use in diagnosis. There are no warranties, expressed or implied, which extend beyond this description. Company is not liable for any personal injury or economic loss resulting from this product.
