

Cytokeratin 5/6/18 Antibody

Mouse Monoclonal Antibody [Clone SPM267]

Catalog No	Format	Size
MSM36X-2036-P0	Purified Ab with BSA and Azide at 200ug/ml	20 ug
MSM36X-2036-P1	Purified Ab with BSA and Azide at 200ug/ml	100 ug
MSM36X-2036-P1ABX	Purified Ab WITHOUT BSA and Azide at 1.0mg/ml	100 ug

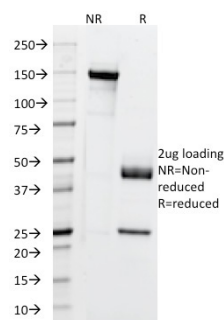
Applications	Tested Dillution	Note
Flow Cytometry (Flow)	1-2ug/million cells	
Immunofluorescence (IF)	1-3ug/ml	
Immunohistochemistry (IHC)	1-2ug/ml	30 min at RT. Staining of formalin-fixed tissues requires heating tissue sections in 10mM Tris with 1mM EDTA, pH 9.0, for 45 min at 95°C followed by cooling at RT for 20 minutes
Western Blot (WB)	2-4ug/ml	

Product Details

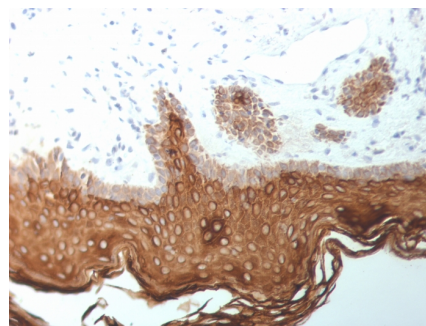
Clone	SPM267
Gene Name	N/A
Immunogen	Detergent-insoluble fraction of psoriatic human epidermis
Host	Mouse
Clonality	Monoclonal
Isotype / Light Chain	IgG1 / Kappa
Mol. Weight of Antigen	45.58kDa
Cellular Localization	N/A
Species Reactivity	Cow, Human, Rat
Positive Control	HeLa, HepG2 or PC12 cells. Tonsil or Skin.

*Optimal dilution for a specific application should be determined.

Product Images for Cytokeratin 5/6/18 Antibody



SDS-PAGE Analysis of Purified Cytokeratin, 5/6/18 Mouse Monoclonal Antibody (SPM267). Confirmation of Purity and Integrity of Antibody.



Formalin-fixed, paraffin-embedded human Skin stained with Cytokeratin, 5/6/18 Mouse Monoclonal Antibody (SPM267).

Specificity & Comments

It recognizes polypeptides of 58kDa, 56kDa, and 45kDa, identified as cytokeratin 5, 6, and 18 respectively. It shows no reaction with keratin 1, 8, or 19. This MAb shows a broad pattern of reactivity with epithelial tissues, from simple glandular epithelia to stratified squamous epithelia. Epithelial cells are labeled whether they are ectodermal, mesodermal, or endodermal in origin. This MAb is useful in detecting cells of epithelial origin in mixed tumors, in effusions, in bone marrow samples, or in tissue culture cells.

Limitations and Warranty

This antibody is available for research use only and is not approved for use in diagnosis. There are no warranties, expressed or implied, which extend beyond this description. Company is not liable for any personal injury or economic loss resulting from this product.

Supplied As

200ug/ml of Ab Purified from Bioreactor Concentrate by Protein A/G. Prepared in 10mM PBS with 0.05% BSA & 0.05% azide. Also available WITHOUT BSA & azide at 1.0mg/ml.

Storage and Stability

Antibody with azide - store at 2 to 8°C. Antibody without azide - store at -20 to -80°C. Antibody is stable for 24 months. Non-hazardous. No MSDS required.
