

## Cytokeratin 5/6 (Basal, Myoepithelial & Mesothelial Cell Marker) Antibody

Mouse Monoclonal Antibody [Clone KRT5.6/2090]

Catalog No	Format	Size
MSM38-2090-P0	Purified Ab with BSA and Azide at 200ug/ml	20 ug
MSM38-2090-P1	Purified Ab with BSA and Azide at 200ug/ml	100 ug
MSM38-2090-P1ABX	Purified Ab WITHOUT BSA and Azide at 1.0mg/ml	100 ug

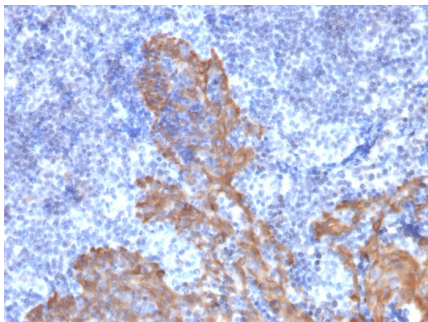
Applications	Tested Dillution	Note
Immunohistochemistry (IHC)	1-2ug/ml	30 min at RT. Staining of formalin-fixed tissues requires heating tissue sections in 10mM Tris with 1mM EDTA, pH 9.0, for 45 min at 95°C followed by cooling at RT for 20 minutes

### Product Details

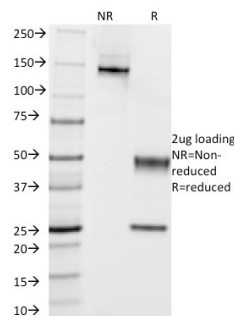
<b>Clone</b>	KRT5.6/2090
<b>Gene Name</b>	KRT5
<b>Immunogen</b>	Recombinant full-length human KRT5 protein
<b>Host</b>	Mouse
<b>Clonality</b>	Monoclonal
<b>Isotype / Light Chain</b>	IgG1 / Kappa
<b>Mol. Weight of Antigen</b>	58kDa (KRT5); 56kDa (KRT6A)
<b>Species Reactivity</b>	Human
<b>Positive Control</b>	HeLa, HepG2 or PC12 cells. Human prostate, tonsil or skin.

\*Optimal dilution for a specific application should be determined.

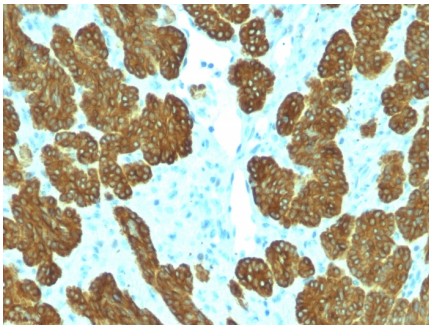
### Product Images for Cytokeratin 5/6 (Basal, Myoepithelial & Mesothelial Cell Marker) Antibody



Formalin-fixed, paraffin-embedded human Tonsil stained with Cytokeratin 5/6 Mouse Monoclonal Antibody (KRT5.6/2438).



SDS-PAGE Analysis Purified Cytokeratin 5/6 Mouse Monoclonal Antibody (KRT5.6/2438). Confirmation of Integrity and Purity of Antibody.



Formalin-fixed, paraffin-embedded human Basal Cell Carcinoma stained with Cytokeratin 5/6 Mouse Monoclonal Antibody (KRT5.6/2438).

### Specificity & Comments

It recognizes polypeptides of 58kDa and 56kDa, identified as cytokeratin 5 and 6 respectively. It shows no reaction with keratin 1, 8, or 19. It stains the basal cells of squamous and glandular epithelia, part of stratum spinosum of squamous epithelium, myoepithelium, and mesothelium. It does not stain adenous epithelium. Therefore, this antibody can be used to distinguish squamous carcinoma from adenocarcinoma, and to differentiate epitheliod mesothelioma from non-epitheliod mesothelioma and adenocarcinoma. It is also a useful antibody in the identification of mesothelioma and lung squamous cell carcinoma.

### Limitations and Warranty

This antibody is available for research use only and is not approved for use in diagnosis. There are no warranties, expressed or implied, which extend beyond this description. Company is not liable for any personal injury or economic loss resulting from this product.

### Supplied As

200ug/ml of Ab Purified from Bioreactor Concentrate by Protein A/G. Prepared in 10mM PBS with 0.05% BSA & 0.05% azide. Also available WITHOUT BSA & azide at 1.0mg/ml.

### Storage and Stability

Antibody with azide - store at 2 to 8°C. Antibody without azide - store at -20 to -80°C. Antibody is stable for 24 months. Non-hazardous. No MSDS required.