

Cytokeratin, Acidic (Type I or LMW) (Epithelial Marker) Antibody

Mouse Monoclonal Antibody [Clone AE-1]

Catalog No	Format	Size
MSM4-253-P0	Purified Ab with BSA and Azide at 200ug/ml	20 ug
MSM4-253-P1	Purified Ab with BSA and Azide at 200ug/ml	100 ug
MSM4-253-P1ABX	Purified Ab WITHOUT BSA and Azide at 1.0mg/ml	100 ug

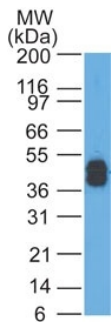
Applications	Tested Dillution	Note
Flow Cytometry (Flow)	1-2ug/million cells	
Immunofluorescence (IF)	1-3ug/ml	
Immunohistochemistry (IHC)	1-2ug/ml	30 min at RT. Staining of formalin-fixed tissues requires heating tissue sections in 10mM Tris with 1mM EDTA, pH 9.0, for 45 min at 95°C followed by cooling at RT for 20 minutes
Western Blot (WB)	2-4ug/ml	

Product Details

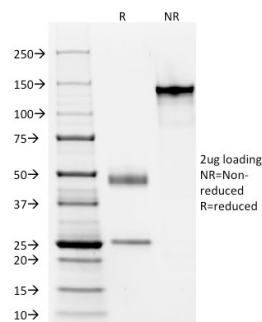
Clone	AE-1
Gene Name	KRT77
Immunogen	Human epidermal keratin
Host	Mouse
Clonality	Monoclonal
Isotype / Light Chain	IgG1 / Kappa
Mol. Weight of Antigen	40-56.5kDa
Species Reactivity	Chicken, Cow, Dog, Human, Monkey, Mouse, Rabbit, Rat, Turtle
Positive Control	Skin or squamous cell carcinoma (IHC).

*Optimal dilution for a specific application should be determined.

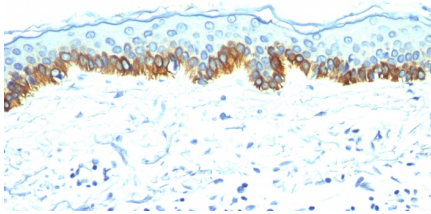
Product Images for Cytokeratin, Acidic (Type I or LMW) (Epithelial Marker) Antibody



Western Blot Analysis of A431 cells using Cytokeratin, LMW Mouse Monoclonal Antibody (AE-1).



SDS-PAGE Analysis of Purified Cytokeratin, LMW Monoclonal Antibody (AE-1). Confirmation of Purity and Integrity of Antibody.



Formalin-fixed, paraffin-embedded human Skin stained with Cytokeratin, LMW Mouse Monoclonal Antibody (AE-1).

Specificity & Comments

This MAb recognizes the 56.5kDa (CK10); 50kDa (CK14); 50kDa (CK15); 48kDa (CK16); 40kDa (CK19) keratins of the acidic (Type I or LMW) subfamily. Twenty human keratins are resolved with two-dimensional gel electrophoresis into acidic (pI , 48, 46, 45, and 40kDa. MAb AE3 recognizes the 65-67, 64, 59, 58, 56, and 52kDa keratins of basic subfamily. Many studies have shown the usefulness of keratins as markers in cancer research and tumor diagnosis. AE1/AE3 is a broad spectrum anti pan-keratin antibody cocktail, which differentiates epithelial tumors from non-epithelial tumors e.g. squamous vs. adenocarcinoma of the lung, liver carcinoma, breast cancer, and esophageal cancer.

Limitations and Warranty

This antibody is available for research use only and is not approved for use in diagnosis. There are no warranties, expressed or implied, which extend beyond this description. Company is not liable for any personal injury or economic loss resulting from this product.

Supplied As

200ug/ml of Ab Purified from Bioreactor Concentrate by Protein A/G. Prepared in 10mM PBS with 0.05% BSA & 0.05% azide. Also available WITHOUT BSA & azide at 1.0mg/ml.

Storage and Stability

Antibody with azide - store at 2 to 8°C. Antibody without azide - store at -20 to -80°C. Antibody is stable for 24 months. Non-hazardous. No MSDS required.

Research Areas

Autophagy, Developmental Biology
