

## Recombinant Human Nuclear Antigen (HNA) (Human Cell Marker) Antibody

Mouse Monoclonal Antibody [Clone r235-1]

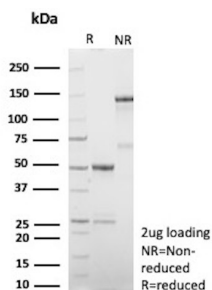
Catalog No	Format	Size
MSM4-344-P0	Purified Ab with BSA and Azide at 200ug/ml	20 ug
MSM4-344-P1	Purified Ab with BSA and Azide at 200ug/ml	100 ug
MSM4-344-P1ABX	Purified Ab WITHOUT BSA and Azide at 1.0mg/ml	100 ug

Applications	Tested Dillution	Note
Flow Cytometry (Flow)	1-2ug/million cells	
Immunofluorescence (IF)	1-3ug/ml	

Product Details	
Clone	r235-1
Gene Name	N/A
Immunogen	Nuclei of human myeloid leukemia biopsy cells
Host	Mouse
Clonality	Monoclonal
Isotype / Light Chain	IgG2a / Kappa
Mol. Weight of Antigen	70kDa & 80kDa
Cellular Localization	N/A
Species Reactivity	Human, Non-Human primates
Positive Control	All human cells. Human tonsil.

\*Optimal dilution for a specific application should be determined.

### Product Images for Recombinant Human Nuclear Antigen (HNA) (Human Cell Marker) Antibody



SDS-PAGE Analysis Purified Human-Nuclear-Antigen Mouse Recombinant Monoclonal Antibody (rHNA/344 ). Confirmation of Purity and Integrity of Antibody

### Specificity & Comments

This monoclonal antibody is an excellent marker for human cells in xenographic model research. It reacts specifically with human cells. It is a part of a new panel of reagents, which recognizes subcellular organelles or compartments of human cells. These markers may be useful in identification of these organelles in cells, tissues, and biochemical preparations. Recombinant MAb rHNA/344 recognizes an antigen associated with the nuclei in human cells. It can be used to stain the nuclei in cell or tissue preparations and can be used as a nuclear marker in subcellular fractions. It produces a speckled pattern in normal and malignant cells and may be used to stain the nuclei of cells in fixed or frozen tissue sections. It can also be used with paraformaldehyde fixed frozen tissue or cell preparations.

### Limitations and Warranty

This antibody is available for research use only and is not approved for use in diagnosis. There are no warranties, expressed or implied, which extend beyond this description. Company is not liable for any personal injury or economic loss resulting from this product.

### Supplied As

200ug/ml of Ab purified from Bioreactor Concentrate by Protein A/G. Prepared in 10mM PBS with 0.05% BSA & 0.05% azide. Also available WITHOUT BSA & azide at 1.0mg/ml.

### Storage and Stability

Antibody with azide - store at 2 to 8 °C. Antibody without azide - store at -20 to -80 °C. Antibody is stable for 24 months. Non-hazardous. No MSDS required.