

Bromodeoxyuridine (BrdU) (Proliferation Marker) Antibody

Mouse Monoclonal Antibody [Clone MoBu-1]

Catalog No	Format	Size
MSM4-884-P0	Purified Ab with BSA and Azide at 200ug/ml	20 ug
MSM4-884-P1	Purified Ab with BSA and Azide at 200ug/ml	100 ug
MSM4-884-P1ABX	Purified Ab WITHOUT BSA and Azide at 1.0mg/ml	100 ug

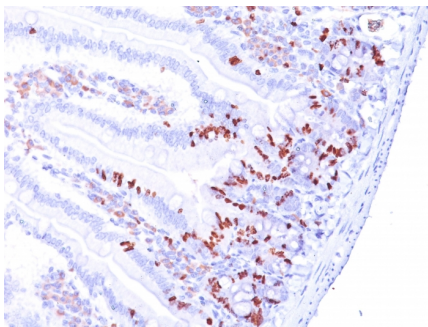
Applications	Tested Dillution	Note
Flow Cytometry (Flow)	1-2ug/million cells	
Immunofluorescence (IF)	1-3ug/ml	
Immunohistochemistry (IHC)	1-2ug/ml	30 min at RT. Staining of formalin-fixed tissues requires heating tissue sections in 10mM Tris with 1mM EDTA, pH 9.0, for 45 min at 95°C followed by cooling at RT for 20 minutes

Product Details

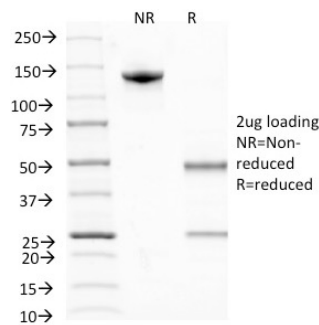
Clone	MoBu-1
Immunogen	Bromodeoxyuridine (BrdU) conjugated to hemocyanine (isolated from <i>Helix pomatia</i>)
Host	Mouse
Clonality	Monoclonal
Isotype / Light Chain	IgG1 / Kappa
Mol. Weight of Antigen	Depends on the target
Cellular Localization	N/A
Species Reactivity	All species
Positive Control	Cells grown in presence of BrdU or tissues from experimental animals injected with BrdU.

*Optimal dilution for a specific application should be determined.

Product Images for Bromodeoxyuridine (BrdU) (Proliferation Marker) Antibody



Formalin-fixed, paraffin-embedded Mouse Small Intestine stained with BrdU Monoclonal Antibody (MoBu-1).



SDS-PAGE Analysis of Purified BrdU Monoclonal Antibody (MoBu-1). Confirmation of Purity and Integrity of Antibody.

Specificity & Comments

It reacts with Bromodeoxyuridine (BrdU) in single stranded DNA (produced by partial denaturation of double stranded DNA), BrdU coupled to a protein carrier, as well as free BrdU. BrdU is a thymidine analog, incorporated into cell nuclei during DNA synthesis prior to mitosis. Antibody to BrdU is helpful in detecting S-phase cells, providing useful information on the aggressiveness of tumors.

Supplied As

200ug/ml of Ab Purified from Bioreactor Concentrate by Protein A/G. Prepared in 10mM PBS with 0.05% BSA & 0.05% azide. Also available WITHOUT BSA & azide at 1.0mg/ml.

Storage and Stability

Antibody with azide - store at 2 to 8°C. Antibody without azide - store at -20 to -80°C. Antibody is stable for 24 months. Non-hazardous. No MSDS required.

Limitations and Warranty

This antibody is available for research use only and is not approved for use in diagnosis. There are no warranties, expressed or implied, which extend beyond this description. Company is not liable for any personal injury or economic loss resulting from this product.
