

Mitochondria (Marker for Human Cells) Antibody

Mouse Monoclonal Antibody [Clone AE-1]

| Catalog No | Format | Size |
|----------------|---|--------|
| MSM5-905-P0 | Purified Ab with BSA and Azide at 200ug/ml | 20 ug |
| MSM5-905-P1 | Purified Ab with BSA and Azide at 200ug/ml | 100 ug |
| MSM5-905-P1ABX | Purified Ab WITHOUT BSA and Azide at 1.0mg/ml | 100 ug |

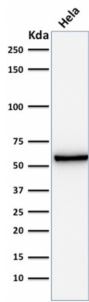
| Applications | Tested Dillution | Note |
|----------------------------|------------------|---|
| Immunofluorescence (IF) | 1-3ug/ml | |
| Immunohistochemistry (IHC) | 1-2ug/ml | 30 min at RT. Staining of formalin-fixed tissues requires heating tissue sections in 10mM Tris with 1mM EDTA, pH 9.0, for 45 min at 95°C followed by cooling at RT for 20 minutes |
| Western Blot (WB) | 2-4ug/ml | |

Product Details

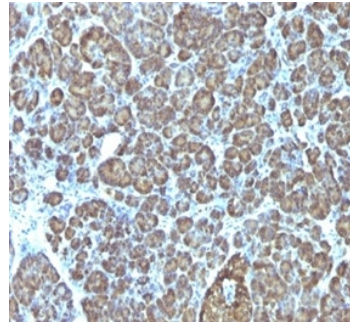
| | |
|-------------------------------|---|
| Clone | AE-1 |
| Gene Name | N/A |
| Immunogen | Semi-purified mitochondrial preparation |
| Host | Mouse |
| Clonality | Monoclonal |
| Isotype / Light Chain | IgG1 / Kappa |
| Mol. Weight of Antigen | 60kDa |
| Cellular Localization | N/A |
| Species Reactivity | Human |
| Positive Control | HeLa or HepG2 cells. Hepatic carcinoma. |

*Optimal dilution for a specific application should be determined.

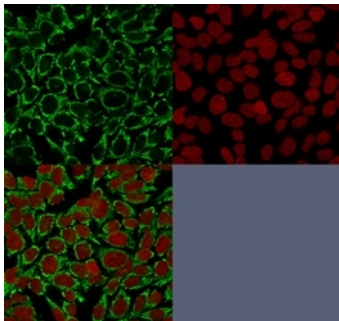
Product Images for Mitochondria (Marker for Human Cells) Antibody



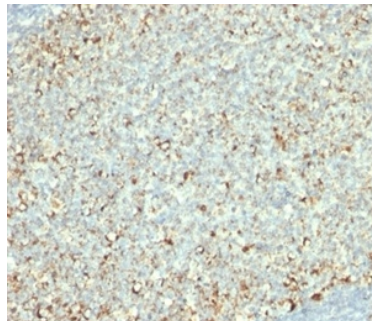
Western blot analysis of HeLa cell lysate using Mitochondria Mouse Monoclonal Antibody (AE-1).



Formalin-fixed, paraffin-embedded human pancreas stained with Mitochondria Mouse Monoclonal Antibody (AE-1).



Confocal immunofluorescence image of HeLa cells. Mitochondria Mouse Monoclonal Antibody (AE-1). Antibody labeled with CF488 (green). RedDot is used to label the nuclei red.



Formalin-fixed, paraffin-embedded human tonsil stained with Mitochondria Mouse Monoclonal Antibody (AE-1).

Specificity & Comments

MAB MTC02 recognizes a 60kDa antigen associated with the mitochondria in human cells. It is a part of a new panel of reagents, which recognizes subcellular organelles or compartments of human cells. These markers may be useful in identification of these organelles in cells, tissues, and biochemical preparations. MAB MTC02 recognizes an antigen associated with the mitochondria in human cells only. It can be used to stain the mitochondria in cell or tissue preparations and can be used as a mitochondrial marker in subcellular fractions. It produces a spaghetti-like pattern in normal and malignant cells and may be used to stain mitochondria of cells in fixed or frozen tissue sections. It can also be used with paraformaldehyde fixed frozen tissue or cell preparations. MAB MTC02 is an excellent marker for human cells in xenographic model research. It reacts specifically with human cells, including neurons and embryonic stem cells.

Supplied As

200ug/ml of Ab purified from Bioreactor Concentrate by Protein A/G. Prepared in 10mM PBS with 0.05% BSA & 0.05% azide. Also available WITHOUT BSA at 1.0mg/ml.

Storage and Stability

Antibody with azide - store at 2 to 8 °C. Antibody without azide - store at -20 to -80 °C. Antibody is stable for 24 months. Non-hazardous. No MSDS required.

Limitations and Warranty

This antibody is available for research use only and is not approved for use in diagnosis. There are no warranties, expressed or implied, which extend beyond this description. Company is not liable for any personal injury or economic loss resulting from this product.