

HSV1 (Herpes Simplex Virus Type I) ICP8 Antibody

Mouse Monoclonal Antibody [Clone HSVI/2045]

Catalog No	Format	Size
MSM6-2045-P0	Purified Ab with BSA and Azide at 200ug/ml	20 ug
MSM6-2045-P1	Purified Ab with BSA and Azide at 200ug/ml	100 ug
MSM6-2045-P1ABX	Purified Ab WITHOUT BSA and Azide at 1.0mg/ml	100 ug

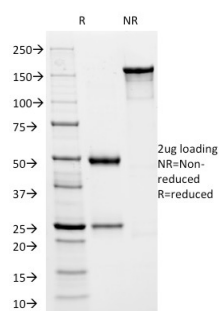
Applications	Tested Dillution	Note
Western Blot (WB)	2-4ug/ml	

Product Details

Clone	HSVI/2045
Gene Name	N/A
Immunogen	Baculovirus-expressed HSV DNA polymerase (POL) and POL/UL42 complex
Host	Mouse
Clonality	Monoclonal
Isotype / Light Chain	IgG1 / Kappa
Mol. Weight of Antigen	150kDa
Cellular Localization	N/A
Species Reactivity	HSV1
Positive Control	HSV1 infected cells. Tissue.

*Optimal dilution for a specific application should be determined.

Product Images for HSV1 (Herpes Simplex Virus Type I) ICP8 Antibody



SDS-PAGE Analysis of Purified HSVI Mouse Monoclonal Antibody (HSVI/2045).
Confirmation of Integrity and Purity

Specificity & Comments

The antibody reacts with HSV type 1 specific antigen. It is suitable for detection of HSV in human cellular material obtained from superficial lesions or biopsies and for the early identification of HSV in infected tissue cultures. The herpes simplex virus (HSV) (also known as cold sore, night fever or fever blister) is a virus that causes a contagious disease. There are two main types of Herpes Simplex Virus (HSV), 1 and 2. The HSV-1 strain generally appears in the orafacial organs. HSV2 usually resides in the sacral ganglion at the base of the spine. All herpes viruses are morphologically identical: they have a large double-stranded DNA genome and the virion consists of an icosahedral nucleo-capsid, which is surrounded by a lipid bilayer envelope. ICP8, the HSV1 encoded single-strand DNA (ssDNA)-binding protein, is the major DNA binding protein of HSV1. ICP8 promotes single-stranded DNA to assemble into a homologous duplex plasmid producing a displacement loop. At higher concentrations, however, ICP8 facilitates the reverse reaction due to its helix destabilizing activity.

Supplied As

200ug/ml of Ab Purified from Bioreactor Concentrate by Protein A/G. Prepared in 10mM PBS with 0.05% BSA & 0.05% azide. Also available WITHOUT BSA & azide at 1.0mg/ml.

Storage and Stability

Antibody with azide - store at 2 to 8°C. Antibody without azide - store at -20 to -80°C. Antibody is stable for 24 months. Non-hazardous. No MSDS required.

Limitations and Warranty

This antibody is available for research use only and is not approved for use in diagnosis. There are no warranties, expressed or implied, which extend beyond this description. Company is not liable for any personal injury or economic loss resulting from this product.
