

## Recombinant Bromodeoxyuridine (BrdU) (Proliferation Marker) Antibody

Rabbit Monoclonal Antibody [Clone BRD2888R]

Catalog No	Format	Size
RBM10-2888-P0	Purified Ab with BSA and Azide at 200ug/ml	20 ug
RBM10-2888-P1	Purified Ab with BSA and Azide at 200ug/ml	100 ug
RBM10-2888-P1ABX	Purified Ab WITHOUT BSA and Azide at 1.0mg/ml	100 ug

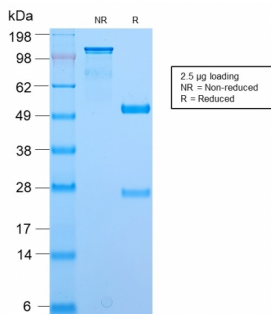
Applications	Tested Dillution	Note
Immunohistochemistry (IHC)	1-2ug/ml	30 min at RT. Staining of formalin-fixed tissues requires heating tissue sections in 10mM Tris with 1mM EDTA, pH 9.0, for 45 min at 95°C followed by cooling at RT for 20 minutes

### Product Details

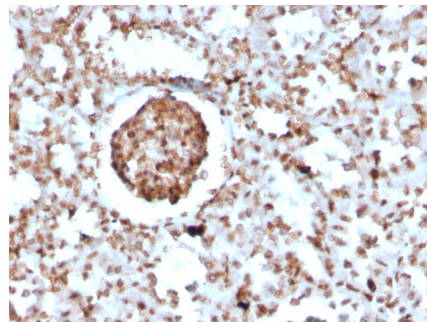
<b>Clone</b>	BRD2888R
<b>Gene Name</b>	N/A
<b>Immunogen</b>	Bromodeoxyuridine (BrdU) conjugated to KLH
<b>Host</b>	Rabbit
<b>Clonality</b>	Monoclonal
<b>Isotype / Light Chain</b>	IgG / Kappa
<b>Mol. Weight of Antigen</b>	307Da
<b>Cellular Localization</b>	N/A
<b>Species Reactivity</b>	All species
<b>Positive Control</b>	Cells grown in presence of BrdU or tissues from experimental animals injected with BrdU.

\*Optimal dilution for a specific application should be determined.

### Product Images for Recombinant Bromodeoxyuridine (BrdU) (Proliferation Marker) Antibody



SDS-PAGE Analysis of Purified BrdU Rabbit Recombinant Monoclonal Antibody (BRD2888R). Confirmation of Purity and Integrity of Antibody.



Formalin-fixed, paraffin-embedded Mouse BrdU-incorporated Kidney stained with BrdU Rabbit Recombinant Monoclonal Antibody (BRD2888R).

### Specificity & Comments

It reacts with Bromodeoxyuridine (BrdU) in single stranded DNA (produced by partial denaturation of double stranded DNA), BrdU coupled to a protein carrier, as well as free BrdU. BrdU is a thymidine analog, incorporated into cell nuclei during DNA synthesis prior to mitosis. Antibody to BrdU is helpful in detecting S-phase cells, providing useful information on the aggressiveness of tumors.

### Supplied As

200ug/ml of Ab Purified from Bioreactor Concentrate by Protein A/G. Prepared in 10mM PBS with 0.05% BSA & 0.05% azide. Also available WITHOUT BSA & azide at 1.0mg/ml.

### Storage and Stability

Antibody with azide - store at 2 to 8°C. Antibody without azide - store at -20 to -80°C. Antibody is stable for 24 months. Non-hazardous. No MSDS required.

### Limitations and Warranty

This antibody is available for research use only and is not approved for use in diagnosis. There are no warranties, expressed or implied, which extend beyond this description. Company is not liable for any personal injury or economic loss resulting from this product.