

## Recombinant Cytokeratin, Type II (Epithelial Marker) Antibody

Rabbit Monoclonal Antibody [Clone KRTH/4392R]

Catalog No	Format	Size
RBM41-4392-P0	Purified Ab with BSA and Azide at 200ug/ml	20 ug
RBM41-4392-P1	Purified Ab with BSA and Azide at 200ug/ml	100 ug
RBM41-4392-P1ABX	Purified Ab WITHOUT BSA and Azide at 1.0mg/ml	100 ug

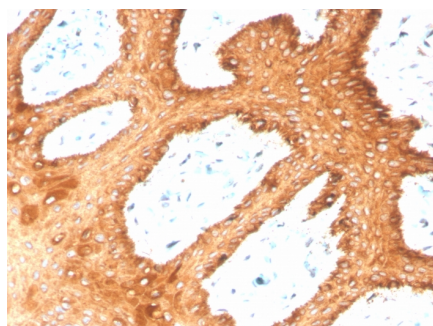
Applications	Tested Dillution	Note
Immunohistochemistry (IHC)	1-2ug/ml	30 min at RT. Staining of formalin-fixed tissues requires heating tissue sections in 10mM Tris with 1mM EDTA, pH 9.0, for 45 min at 95°C followed by cooling at RT for 20 minutes

### Product Details

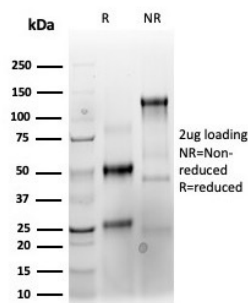
<b>Clone</b>	KRTH/4392R
<b>Gene Name</b>	KRT76
<b>Immunogen</b>	Synthetic peptide corresponding to Type II Cytokeratins residues within aa300-400 of Type II Cytokeratins
<b>Host</b>	Rabbit
<b>Clonality</b>	Monoclonal
<b>Isotype / Light Chain</b>	IgG / Kappa
<b>Mol. Weight of Antigen</b>	66/65/64/57/62/60/51/54kDa
<b>Species Reactivity</b>	Human
<b>Positive Control</b>	Skin or squamous cell carcinoma.

\*Optimal dilution for a specific application should be determined.

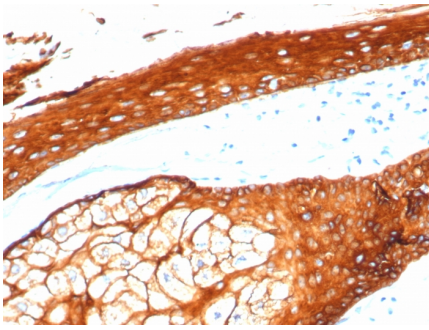
### Product Images for Recombinant Cytokeratin, Type II (Epithelial Marker) Antibody



Formalin-fixed, paraffin-embedded human skin stained with CK Type II Recombinant Rabbit Monoclonal Antibody (KRTH/4392R).



SDS-PAGE Analysis of Purified CK Type II Recombinant Rabbit MAb (KRTH/4392R). Confirmation of Purity and Integrity of Antibody.



Formalin-fixed, paraffin-embedded human skin stained with CK Type II Recombinant Rabbit Monoclonal Antibody (KRTH/4392R).

---

### Specificity & Comments

The keratins are the typical intermediate filament proteins of epithelia, showing an outstanding degree of molecular diversity. Heteropolymeric filaments are formed by pairing of type I and type II molecules. In humans 54 functional keratin genes exist. They are expressed in highly specific patterns related to the epithelial type and stage of cellular differentiation. This antibody can detect high molecular weight CK1, CK2, CK3, CK4, CK5, CK6, CK7 and CK8. It is usually used in a cytokeratin cocktail with type I cytokeratins antibody.

---

### Limitations and Warranty

This antibody is available for research use only and is not approved for use in diagnosis. There are no warranties, expressed or implied, which extend beyond this description. Company is not liable for any personal injury or economic loss resulting from this product.

---

### Supplied As

200ug/ml of Ab purified from Bioreactor Concentrate by Protein A/G. Prepared in 10mM PBS with 0.05% BSA & 0.05% azide. Also available WITHOUT BSA & azide at 1.0mg/ml.

---

### Storage and Stability

Antibody with azide - store at 2 to 8 °C. Antibody without azide - store at -20 to -80 °C. Antibody is stable for 24 months. Non-hazardous. No MSDS required.

---

### Research Areas

Developmental Biology

---