

Recombinant Mitochondria (Marker for Human Cells, Granular RCC's & Salivary Tumors) Antibody

Rabbit Monoclonal Antibody [Clone MTC02/2860R]

Catalog No	Format	Size
RBM6-2860-P0	Purified Ab with BSA and Azide at 200ug/ml	20 ug
RBM6-2860-P1	Purified Ab with BSA and Azide at 200ug/ml	100 ug
RBM6-2860-P1ABX	Purified Ab WITHOUT BSA and Azide at 1.0mg/ml	100 ug

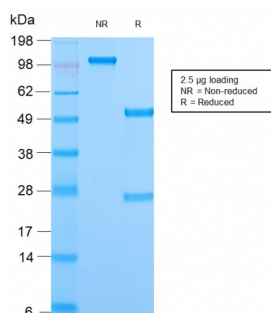
Applications	Tested Dillution	Note
Immunohistochemistry (IHC)	1-2ug/ml	30 min at RT. Staining of formalin-fixed tissues requires heating tissue sections in 10mM Tris with 1mM EDTA, pH 9.0, for 45 min at 95°C followed by cooling at RT for 20 minutes

Product Details

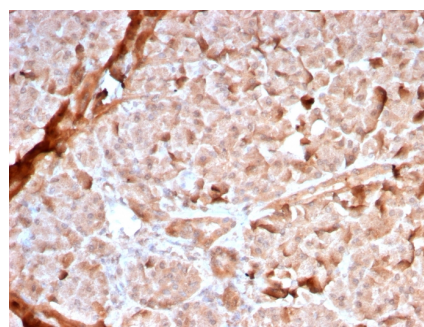
Clone	MTC02/2860R
Gene Name	N/A
Immunogen	Semi-Purified mitochondrial preparation
Host	Rabbit
Clonality	Monoclonal
Isotype / Light Chain	IgG / Kappa
Mol. Weight of Antigen	60kDa
Cellular Localization	N/A
Species Reactivity	Human
Positive Control	HeLa or HepG2 cells. Hepatic carcinoma.

*Optimal dilution for a specific application should be determined.

Product Images for Recombinant Mitochondria (Marker for Human Cells, Granular RCC's & Salivary Tumors) Antibody



SDS-PAGE Analysis of Purified Mitochondria Rabbit Recombinant Monoclonal (MTC02/2860R). Confirmation of Purity and Integrity of Antibody.



Formalin-fixed, paraffin-embedded human Pancreas stained with Mitochondria Rabbit Recombinant Monoclonal Antibody (MTC02/2860R).

Specificity & Comments

This MAb recognizes a 60kDa antigen associated with the mitochondria in human cells. It can be used to stain mitochondria in cell or tissue preparations and can be used as a mitochondrial marker in subcellular fractions. It produces a spaghetti-like pattern in normal and malignant cells. This antibody is an excellent marker for human cells in xenographic model research. It reacts specifically with human cells, including neurons and embryonic stem cells. Immunostaining pattern with anti-mitochondrial MAb has been reported as a useful discriminatory adjunct in the complex differential diagnosis of granular renal cell tumors. Reportedly, this MAb facilitates the classification of salivary tumors.

Supplied As

200ug/ml of Ab Purified from Bioreactor Concentrate by Protein A/G. Prepared in 10mM PBS with 0.05% BSA & 0.05% azide. Also available WITHOUT BSA at 1.0mg/ml.

Storage and Stability

Antibody with azide - store at 2 to 8°C. Antibody is stable for 24 months. Non-hazardous. No MSDS required.

Limitations and Warranty

This antibody is available for research use only and is not approved for use in diagnosis. There are no warranties, expressed or implied, which extend beyond this description. Company is not liable for any personal injury or economic loss resulting from this product.
