

## Recombinant HPV-16 (Human Papilloma Virus 16) Antibody

Rabbit Monoclonal Antibody [Clone HPV16/2058R]

Catalog No	Format	Size
RBM8-2058-P0	Purified Ab with BSA and Azide at 200ug/ml	20 ug
RBM8-2058-P1	Purified Ab with BSA and Azide at 200ug/ml	100 ug
RBM8-2058-P1ABX	Purified Ab WITHOUT BSA and Azide at 1.0mg/ml	100 ug

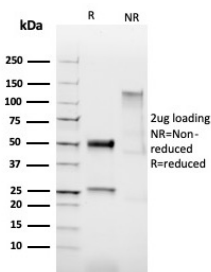
Applications	Tested Dillution	Note
Immunohistochemistry (IHC)	1-2ug/ml	30 min at RT. Staining of formalin-fixed tissues requires heating tissue sections in 10mM Tris with 1mM EDTA, pH 9.0, for 45 min at 95°C followed by cooling at RT for 20 minutes

### Product Details

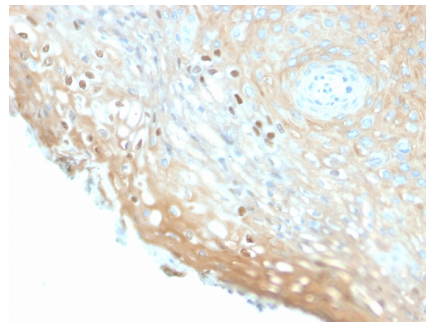
<b>Clone</b>	HPV16/2058R
<b>Gene Name</b>	N/A
<b>Immunogen</b>	Human papilloma virus type 16, major capsid protein L1
<b>Host</b>	Rabbit
<b>Clonality</b>	Monoclonal
<b>Isotype / Light Chain</b>	IgG / Kappa
<b>Mol. Weight of Antigen</b>	57kDa
<b>Cellular Localization</b>	N/A
<b>Species Reactivity</b>	HPV-16
<b>Positive Control</b>	HPV-16 infected cells. Cervical tissue.

\*Optimal dilution for a specific application should be determined.

### Product Images for Recombinant HPV-16 (Human Papilloma Virus 16) Antibody



SDS-PAGE Analysis of Purified HPV16 Rabbit Recombinant Monoclonal Antibody (HPV16/2058R). Confirmation of Purity and Integrity of Antibody.



Formalin-fixed, paraffin-embedded human cervix stained with HPV16 Rabbit Recombinant Monoclonal Antibody (HPV16/2058R).

### Specificity & Comments

Reacts with a protein of 57kDa, identified as the L1 protein of human papilloma virus type 16 (HPV-16). It is the major capsid protein of HPV-16. Infection with specific types of HPV has been associated with an increased risk of developing cervical neoplasia. HPV types 6 and 11 have been associated with relatively benign diseases such as genital warts but types 16 and 18 are strongly associated with cervical, vaginal, and vulvar malignancies. The antibody reacts very strongly with formalin-fixed, paraffin-embedded tissues containing HPV-16 or -33; very weak reactions were occasionally observed with biopsy specimens or smears containing HPV-6 or HPV-11. It cross-reacts with HPV37.

### Supplied As

200ug/ml of Ab Purified from Bioreactor Concentrate by Protein A/G. Prepared in 10mM PBS with 0.05% BSA & 0.05% azide. Also available WITHOUT BSA & azide at 1.0mg/ml.

### Storage and Stability

Antibody with azide - store at 2 to 8°C. Antibody without azide - store at -20 to -80°C. Antibody is stable for 24 months. Non-hazardous. No MSDS required.

## Limitations and Warranty

This antibody is available for research use only and is not approved for use in diagnosis. There are no warranties, expressed or implied, which extend beyond this description. Company is not liable for any personal injury or economic loss resulting from this product.

---