

## HSV1 (Herpes Simplex Virus Type I) Antibody

Rabbit Polyclonal Antibody [Clone N/A]

Catalog No	Format	Size
RBP3-1800-P0	Purified Ab with BSA and Azide at 200ug/ml	20 ug
RBP3-1800-P1	Purified Ab with BSA and Azide at 200ug/ml	100 ug
RBP3-1800-P1ABX	Purified Ab WITHOUT BSA and Azide at 1.0mg/ml	100 ug

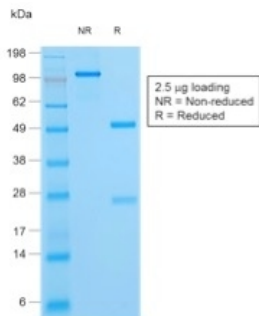
Applications	Tested Dillution	Note
Immunohistochemistry (IHC)	1-2ug/ml	30 min at RT. Staining of formalin-fixed tissues requires heating tissue sections in 10mM Tris with 1mM EDTA, pH 9.0, for 45 min at 95°C followed by cooling at RT for 20 minutes

### Product Details

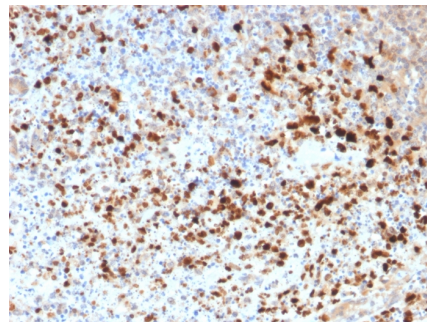
Clone	N/A
Gene Name	N/A
Immunogen	Detergent-solubilized herpes simplex virus (HSV) type 1 infected cells
Host	Rabbit
Clonality	Polyclonal
Isotype / Light Chain	IgG / Kappa
Mol. Weight of Antigen	N/A
Cellular Localization	N/A
Species Reactivity	HSV1
Positive Control	HSV1 infected cells. Tissue.

\*Optimal dilution for a specific application should be determined.

### Product Images for HSV1 (Herpes Simplex Virus Type I) Antibody



SDS-PAGE Analysis of Purified HSV1 Rabbit Polyclonal Antibody Confirmation of Purity and Integrity of Antibody.



Formalin-fixed, paraffin-embedded human Cervix stained with HSV1 Rabbit Polyclonal Antibody.

### Specificity & Comments

The antibody reacts with HSV type 1 specific antigen. It is suitable for detection of HSV in human cellular material obtained from superficial lesions or biopsies and for the early identification of HSV in infected tissue cultures. The herpes simplex virus (HSV) (also known as cold sore, night fever or fever blister) is a virus that causes a contagious disease. There are two main types of Herpes Simplex Virus (HSV), 1 and 2. The HSV-1 strain generally appears in the orafacial organs. HSV2 usually resides in the sacral ganglion at the base of the spine. All herpes viruses are morphologically identical: they have a large double-stranded DNA genome and the virion consists of an icosahedral nucleocapsid, which is surrounded by a lipid bilayer envelope.

### Supplied As

200ug/ml of Ab Purified by Protein A. Prepared in 10mM PBS with 0.05% BSA & 0.05% azide. Also available WITHOUT BSA at 1.0mg/ml.

### Storage and Stability

Antibody with azide - store at 2 to 8°C. Antibody without azide - store at -20 to -80°C. Antibody is stable for 24 months. Non-hazardous. No MSDS required.

## Limitations and Warranty

This antibody is available for research use only and is not approved for use in diagnosis. There are no warranties, expressed or implied, which extend beyond this description. Company is not liable for any personal injury or economic loss resulting from this product.

---