

## HER-2 / c-erbB-2 / neu / CD340 Antibody

Mouse Monoclonal Antibody [Clone HRB2/258]

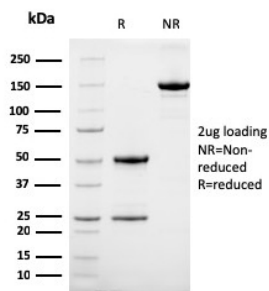
Catalog No	Format	Size
2064-MSM2-CF488-100T	Purified Ab conjugated to CF488	0.5 ml at 100ug/ml

Applications	Tested Dillution	Note
Flow Cytometry (Flow)	1-2ug/million cells	
Immunofluorescence (IF)	1-3ug/ml	

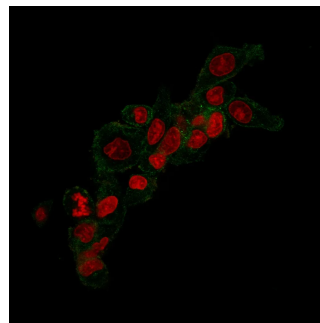
Product Details	
<b>Clone</b>	HRB2/258
<b>Gene Name</b>	ERBB2
<b>Immunogen</b>	Recombinant extracellular domain of human HER-2 protein
<b>Host</b>	Mouse
<b>Clonality</b>	Monoclonal
<b>Isotype / Light Chain</b>	IgG2a / Kappa
<b>Mol. Weight of Antigen</b>	185kDa
<b>Cellular Localization</b>	Cell surface
<b>Species Reactivity</b>	Human, Rat
<b>Positive Control</b>	SKBR-3 cells. Breast Cancers.

\*Optimal dilution for a specific application should be determined.

### Product Images for HER-2 / c-erbB-2 / neu / CD340 Antibody



SDS-PAGE Analysis of Purified HER-2 Mouse Monoclonal Antibody (HRB2/258). Confirmation of Integrity and Purity of Antibody.



Immunofluorescent staining of MeOH-fixed SLBR3 cells with HER2 Mouse Monoclonal Antibody (HRB2/258) followed by goat anti-mouse IgG-CF488 (green); phalloidin counterstain (red).

### Specificity & Comments

Recognizes a protein of 185kDa, which is identified as c-erbB-2/HER-2/neu. Its epitope is localized in the extracellular domain. C-erbB-2/HER-2 is a member of the EGFR family. This MAb is specific and shows minimal cross-reaction with other members of the EGFR-family. Receptors of this family are located on the plasma membrane and consist of an extracellular ligand-binding domain that is connected to a large intracellular domain by a single transmembrane sequence. C-erbB-2/HER-2 protein is over-expressed in a variety of carcinomas especially those of breast and ovary.

### Supplied As

Antibody Purified from Bioreactor Concentrate by Protein A/G and conjugated to various reporter molecules. Prepared in 10mM PBS with 0.05% BSA and 0.05% azide. Contact us if you require this Ab in a different format.

### Storage and Stability

Antibody with azide - store at 4 to 8°C. Antibody is stable for 24 months. Non-hazardous. No MSDS required.

### Research Areas

Autophagy, Breast Cancer, Cancer, Cardiovascular, Developmental Biology, AKT Signaling, Bladder Cancer, Infectious Disease, Signal Transduction, Transcription Factors

## Limitations and Warranty

This antibody is available for research use only and is not approved for use in diagnosis. There are no warranties, expressed or implied, which extend beyond this description. Company is not liable for any personal injury or economic loss resulting from this product.

---