

## Recombinant Calbindin 1 (CALB1) Antibody

Mouse Monoclonal Antibody [Clone rCALB1/8499]

Catalog No	Format	Size
793-MSM7-P0	Purified Ab with BSA and Azide at 200ug/ml	20 ug
793-MSM7-P1	Purified Ab with BSA and Azide at 200ug/ml	100 ug
793-MSM7-P1ABX	Purified Ab WITHOUT BSA and Azide at 1.0mg/ml	100 ug

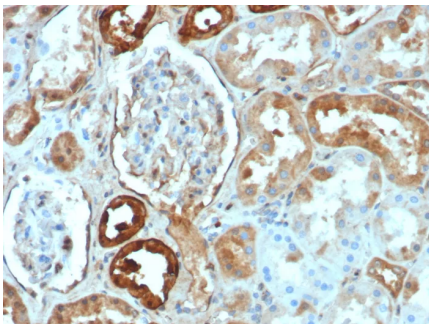
Applications	Tested Dillution	Note
Immunohistochemistry (IHC)	1-2ug/ml	30 min at RT. Staining of formalin-fixed tissues requires heating tissue sections in 10mM Tris with 1mM EDTA, pH 9.0, for 45 min at 95°C followed by cooling at RT for 20 minutes

### Product Details

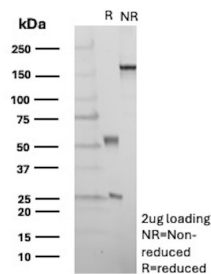
<b>Clone</b>	rCALB1/8499
<b>Gene Name</b>	CALB1
<b>Immunogen</b>	Recombinant fragment (around aa 7-96) of human CALB1 protein (exact sequence is proprietary)
<b>Host</b>	Mouse
<b>Clonality</b>	Monoclonal
<b>Isotype / Light Chain</b>	IgG1 / Kappa
<b>Mol. Weight of Antigen</b>	52kDa
<b>Cellular Localization</b>	Nucleus. Cytoplasm.
<b>Species Reactivity</b>	Human
<b>Positive Control</b>	293T or HepG2 cells. Human prostate kidney or liver. lung pancreas

\*Optimal dilution for a specific application should be determined.

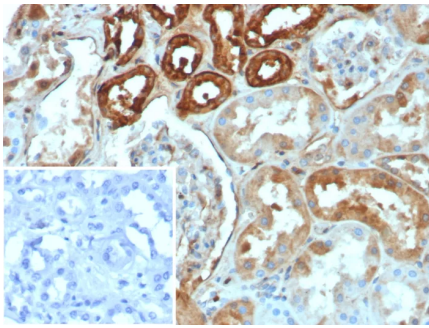
### Product Images for Recombinant Calbindin 1 (CALB1) Antibody



Formalin-fixed, paraffin-embedded human kidney stained with Calbindin 1 Recombinant Mouse Monoclonal Antibody (rCALB1/8499). HIER: Tris/EDTA, pH9.0, 45min. 2°C: HRP-polymer, 30min. DAB, 5min.



SDS-PAGE Analysis of Purified CALB1 Recombinant Mouse Monoclonal Antibody (rCALB1/8499). Confirmation of Purity and Integrity of Antibody.



Formalin-fixed, paraffin-embedded human kidney stained with Calbindin 1 Recombinant Mouse Monoclonal Antibody (rCALB1/8499). Inset: PBS instead of primary antibody; secondary only negative control.

### Specificity & Comments

The family of EF-hand type  $Ca^{2+}$ -binding proteins includes Calbindin D28K, Calbindin D9K, S-100  $\beta$  and  $\gamma$ , Calgranulin A (also designated MRP8), Calgranulin B (also designated MRP14), Calgranulin C and the Parvalbumin family members, including Parvalbumin  $\beta$  and Parvalbumin  $\gamma$  (also designated oncomodulin). Calbindin D28K, also known as calbindin, CALB1, D-28K or vitamin D-dependent calcium-binding protein, is a 261-amino acid protein with 6 EF-hand domains, 4 of which are active calcium-binding domains. Expressed in brain, ovary, uterus, testis, pancreas, liver, kidney and intestine, Calbindin D28K acts as a calcium-buffering agent and alters the activity of the plasma membrane ATPase. In neuronal cells, Calbindin D28K modulates calcium channel activity, calcium transients and intrinsic neuronal firing activity. Also, Calbindin D28K has been implicated to play a role in apoptosis and microtubule function.

### Limitations and Warranty

This antibody is available for research use only and is not approved for use in diagnosis. There are no warranties, expressed or implied, which extend beyond this description. Company is not liable for any personal injury or economic loss resulting from this product.

### Supplied As

200ug/ml of Ab purified from Bioreactor Concentrate by Protein A/G. Prepared in 10mM PBS with 0.05% BSA & 0.05% azide. Also available WITHOUT BSA & azide at 1.0mg/ml.

### Storage and Stability

Antibody with azide - store at 2 to 8°C. Antibody without azide - store at -20 to -80°C. Antibody is stable for 24 months. Non-hazardous. No MSDS required.

### Research Areas

Neuroscience