

Recombinant FLI1 (Ewing s Sarcoma & Endothelial Marker) Antibody

Rabbit Monoclonal Antibody [Clone FLI1/4371R]

Catalog No	Format	Size
2313-RBM4-P0	Purified Ab with BSA and Azide at 200ug/ml	20 ug
2313-RBM4-P1	Purified Ab with BSA and Azide at 200ug/ml	100 ug
2313-RBM4-P1ABX	Purified Ab WITHOUT BSA at 1.0mg/ml	100 ug

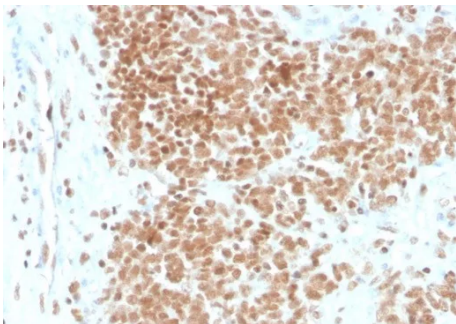
Applications	Tested Dillution	Note
Immunohistochemistry (IHC)	1-2ug/ml	30 min at RT. Staining of formalin-fixed tissues requires heating tissue sections in 10mM Tris with 1mM EDTA, pH 9.0, for 45 min at 95°C followed by cooling at RT for 20 minutes

Product Details

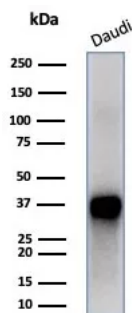
Clone	FLI1/4371R
Gene Name	FLI1
Immunogen	Recombinant full-length human FLI1 protein
Host	Rabbit
Clonality	Monoclonal
Isotype / Light Chain	IgG / Kappa
Mol. Weight of Antigen	51kDa
Cellular Localization	Nucleus.
Species Reactivity	Human
Positive Control	Ewing s sarcoma (EWS) or angiosarcoma. THP1 or Raji cells. Human tonsil

*Optimal dilution for a specific application should be determined.

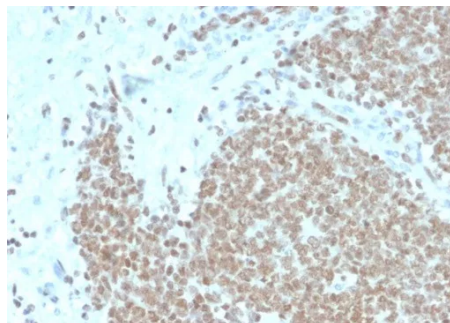
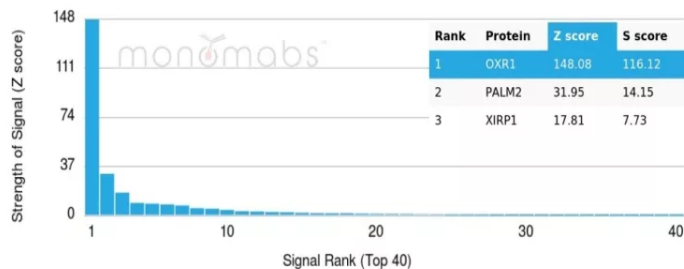
Product Images for Recombinant FLI1 (Ewing s Sarcoma & Endothelial Marker) Antibody



Formalin-fixed, paraffin-embedded human Ewing's Sarcoma (EWS) stained with Fli1 Recombinant Rabbit Monoclonal Antibody (FLI1/4371R). HIER: Tris/EDTA, pH9.0, 45min. 2°C: HRP-polymer, 30min. DAB, 5min.



Western blot analysis of Daudi cell lysate using Fli1 Recombinant Rabbit Monoclonal Antibody (FLI1/4371R).



Formalin-fixed, paraffin-embedded human Ewing's Sarcoma (EWS) stained with Fli1 Recombinant Rabbit Monoclonal Antibody (FLI1/4371R). HIER: Tris/EDTA, pH9.0, 45min. 2°C: HRP-polymer, 30min. DAB, 5min.

Analysis of Protein Array containing more than 19,000 full-length human proteins using Fli1 Recombinant Rabbit Monoclonal Antibody (FLI1/4371R). Z- and S- Score: The Z-score represents the strength of a signal that a monoclonal antibody (MAb) (in combination with a fluorescently-tagged anti-IgG secondary antibody) produces when binding to a particular protein on the HuProt™ array. Z-scores are described in units of standard deviations (SD's) above the mean value of all signals generated on that array. If targets on HuProt™ are arranged in descending order of the Z-score, the S-score is the difference (also in units of SD's) between the Z-score. S-score therefore represents the relative target specificity of a MAb to its intended target. A MAb is considered to be specific to its intended target, if the MAb has an S-score of at least 2.5. For example, if a MAb binds to protein X with a Z-score of 43 and to protein Y with a Z-score of 14, then the S-score for the binding of that MAb to protein X is equal to 29.

Specificity & Comments

Recognizes a protein of 51kDa, which is identified as FLI1. This protein, a member of the ETS family of DNA binding transcription factors, is involved in cellular proliferation and tumorigenesis. Ets-1 is the prototype member of a family of genes identified on the basis of homology to the v-Ets oncogene isolated from the E26 erythroblastosis virus. Members of the Ets gene family share a highly conserved carboxy-terminal domain containing a sequence related to the SV40 large T antigen nuclear localization signal sequence. Approximately 90% of Ewing's Sarcoma (EWS) / Primitive Neuroectodermal Tumors (PNET) have a specific translocation, t(11;22)(q24;q12), which results in fusion of EWS to Fli-1, and production of an EWS-Fli-1 fusion protein. Among normal tissues only endothelial cells and small lymphocytes express Fli-1. This protein is expressed in majority of vascular tumors including angiosarcomas, hemangioendotheliomas, hemangiomas, and Kaposi's Sarcomas. High sensitivity and specificity of Fli-1 equals to or exceeds that of the established vascular markers like CD31, CD34, and Factor VIII.

Limitations and Warranty

This antibody is available for research use only and is not approved for use in diagnosis. There are no warranties, expressed or implied, which extend beyond this description. Company is not liable for any personal injury or economic loss resulting from this product.

Supplied As

200ug/ml of Ab purified from rabbit anti-serum by Protein A. Prepared in 10mM PBS with 0.05% BSA & 0.05% azide. Also available WITHOUT BSA at 1.0mg/ml.

Storage and Stability

Antibody with azide - store at 2 to 8°C. Antibody without azide - store at -20 to -80°C. Antibody is stable for 24 months. Non-hazardous. No MSDS required.

Research Areas

B Cell Markers, Developmental Biology, Endothelial Cell Marker, Nuclear Marker