

Ksp-Cadherin / CDH16 (Renal Cell Marker) Antibody

Mouse Monoclonal Antibody [Clone CDH16/2449]

Catalog No	Format	Size
1014-MSM7-P0	Purified Ab with BSA and Azide at 200ug/ml	20 ug
1014-MSM7-P1	Purified Ab with BSA and Azide at 200ug/ml	100 ug
1014-MSM7-P1ABX	Purified Ab WITHOUT BSA and Azide at 1.0mg/ml	100 ug

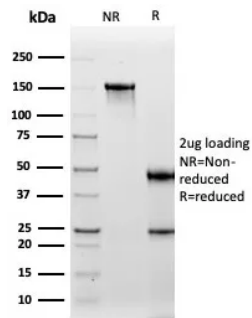
Applications	Tested Dillution	Note
Immunohistochemistry (IHC)	1-2ug/ml	30 min at RT. Staining of formalin-fixed tissues requires heating tissue sections in 10mM Tris with 1mM EDTA, pH 9.0, for 45 min at 95°C followed by cooling at RT for 20 minutes
Western Blot (WB)	2-4ug/ml	

Product Details

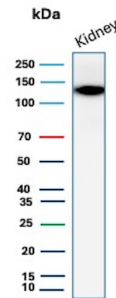
Clone	CDH16/2449
Gene Name	CDH16
Immunogen	Recombinant fragment (around aa 300-600) of human CDH16 protein (exact sequence is proprietary)
Host	Mouse
Clonality	Monoclonal
Isotype / Light Chain	IgG1 / Kappa
Mol. Weight of Antigen	130kDa
Cellular Localization	Cell Surface. Cytoplasm.
Species Reactivity	Human
Positive Control	Human kidney or renal cell carcinoma.

*Optimal dilution for a specific application should be determined.

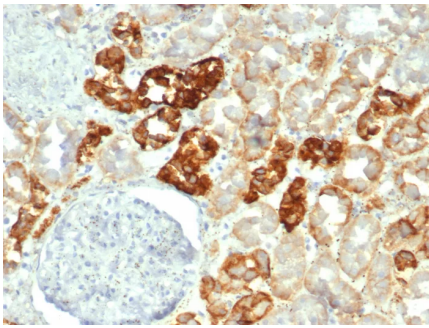
Product Images for Ksp-Cadherin / CDH16 (Renal Cell Marker) Antibody



SDS-PAGE Analysis of Purified CDH16 Mouse Monoclonal Antibody (CDH16/2449). Confirmation of Integrity and Purity of Antibody.



Western Blot Analysis of human kidney tissue lysate using Ksp-Cadherin Mouse Monoclonal Antibody (CDH16/2449).



Formalin-fixed, paraffin-embedded human kidney stained with CDH16 Mouse Monoclonal Antibody (CDH16/2449). HIER: Tris/EDTA, pH9.0, 45min. 2°C: HRP-polymer, 30min. DAB, 5min.

Specificity & Comments

This MAb recognizes a protein of 130kDa, identified as Ksp-cadherin. Cadherins form a superfamily of related glycoproteins that mediate calcium-dependent cell adhesion and transmit signals from the extracellular matrix to the cytoplasm. Cadherins have been implicated in embryogenesis, tissue morphogenesis, tissue structure maintenance, cell polarization, neoplastic invasiveness and metastasis, and membrane transport. It is suggested that Ksp-cadherin is a marker for terminal differentiation of the basolateral membranes of renal tubular epithelial cells. Within the kidney, Ksp-Cadherin is found exclusively in the basolateral membrane of renal tubular epithelial cells and collecting duct cells, and not in glomeruli, renal interstitial cells, or blood vessels. ?Ksp-Cadherin has been suggested to distinguish Chromophobe Renal-Cell Carcinoma from Oncocytoma.

Limitations and Warranty

This antibody is available for research use only and is not approved for use in diagnosis. There are no warranties, expressed or implied, which extend beyond this description. Company is not liable for any personal injury or economic loss resulting from this product.

Supplied As

200ug/ml of Ab purified from Bioreactor Concentrate by Protein A/G. Prepared in 10mM PBS with 0.05% BSA & 0.05% azide. Also available WITHOUT BSA & azide at 1.0mg/ml.

Storage and Stability

Antibody with azide - store at 2 to 8°C. Antibody without azide - store at -20 to -80°C. Antibody is stable for 24 months. Non-hazardous. No MSDS required.