

## Recombinant TIMP2 (Tissue Inhibitor of Metalloproteinase 2) Antibody

Rabbit Monoclonal Antibody [Clone TIMP2/8193R]

Catalog No	Format	Size
7077-RBM9-P0	Purified Ab with BSA and Azide at 200ug/ml	20 ug
7077-RBM9-P1	Purified Ab with BSA and Azide at 200ug/ml	100 ug
7077-RBM9-P1ABX	Purified Ab WITHOUT BSA and Azide at 1.0mg/ml	100 ug

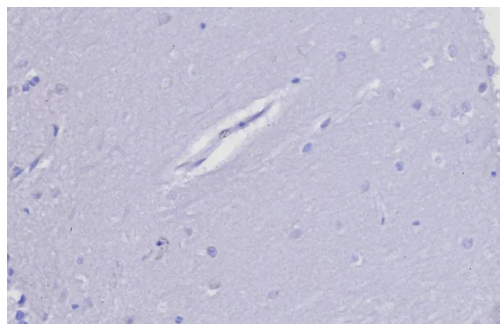
Applications	Tested Dillution	Note
Immunohistochemistry (IHC)	1-2ug/ml	30 min at RT. Staining of formalin-fixed tissues requires heating tissue sections in 10mM Tris with 1mM EDTA, pH 9.0, for 45 min at 95°C followed by cooling at RT for 20 minutes

### Product Details

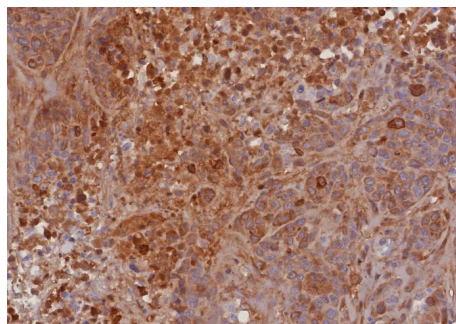
<b>Clone</b>	TIMP2/8193R
<b>Gene Name</b>	TIMP2
<b>Immunogen</b>	Recombinant fragment of human TIMP2 protein (exact sequence is proprietary)
<b>Host</b>	Rabbit
<b>Clonality</b>	Monoclonal
<b>Isotype / Light Chain</b>	IgG / Kappa
<b>Mol. Weight of Antigen</b>	21kDa
<b>Cellular Localization</b>	Cytoplasm. Cell surface.
<b>Species Reactivity</b>	Human
<b>Positive Control</b>	Normal Placenta Prostate or Ovarian Carcinoma.

\*Optimal dilution for a specific application should be determined.

### Product Images for Recombinant TIMP2 (Tissue Inhibitor of Metalloproteinase 2) Antibody



IHC analysis of formalin-fixed, paraffin-embedded human brain. Negative tissue control using TIMP2/8193R at 2ug/ml in PBS for 30min RT. HIER: Tris/EDTA, pH9.0, 45min. 2: HRP-polymer, 30min. DAB, 5min.



Formalin-fixed, paraffin-embedded human bladder carcinoma stained with TIMP2 Rabbit Recombinant Monoclonal Antibody (TIMP2/8193R). HIER: Tris/EDTA, pH9.0, 45min. 2: HRP-polymer, 30min. DAB, 5min.

### Specificity & Comments

It recognizes a protein of 21kDa, identified as tissue inhibitor of metalloproteinases-2 (TIMP-2). It is closely related to TIMP-1 and shows the highest binding affinity to both the latent (pro) and active forms of 72kDa Type IV collagenase (also known as MMP-2 or gelatinase A). It also has affinity for the active form of 92kDa Type IV collagenase (also known as MMP-9 or gelatinase B). TIMP-2 inhibits the proteolytic invasiveness of tumor cells and normal placental trophoblast cells.

### Supplied As

200ug/ml of Ab purified from Bioreactor Concentrate by Protein A/G. Prepared in 10mM PBS with 0.05% BSA & 0.05% azide. Also available WITHOUT BSA & azide at 1.0mg/ml.

### Storage and Stability

Antibody with azide - store at 2 to 8°C. Antibody without azide - store at -20 to -80°C. Antibody is stable for 24 months. Non-hazardous. No MSDS required.

### Research Areas

AKT Signaling, Angiogenesis, Cardiovascular, Immunology

## Limitations and Warranty

This antibody is available for research use only and is not approved for use in diagnosis. There are no warranties, expressed or implied, which extend beyond this description. Company is not liable for any personal injury or economic loss resulting from this product.

---