

Recombinant Cytokeratin 1 (Suprabasal Keratinocyte Marker) Antibody

Rabbit Monoclonal Antibody [Clone KRT1/8342R]

Catalog No	Format	Size
3848-RBM6-P0	Purified Ab with BSA and Azide at 200ug/ml	20 ug
3848-RBM6-P1	Purified Ab with BSA and Azide at 200ug/ml	100 ug
3848-RBM6-P1ABX	Purified Ab WITHOUT BSA and Azide at 1.0mg/ml	100 ug

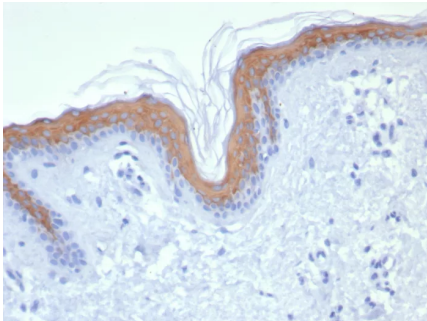
Applications	Tested Dillution	Note
Immunohistochemistry (IHC)	1-2ug/ml	30 min at RT. Staining of formalin-fixed tissues requires heating tissue sections in 10mM Tris with 1mM EDTA, pH 9.0, for 45 min at 95°C followed by cooling at RT for 20 minutes

Product Details

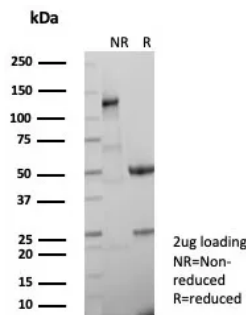
Clone	KRT1/8342R
Gene Name	KRT1
Immunogen	Recombinant full-length human KRT1 protein
Host	Rabbit
Clonality	Monoclonal
Isotype / Light Chain	IgG / Kappa
Mol. Weight of Antigen	67kDa
Cellular Localization	Cytoplasm.
Species Reactivity	Human
Positive Control	Human skin or cervix.

*Optimal dilution for a specific application should be determined.

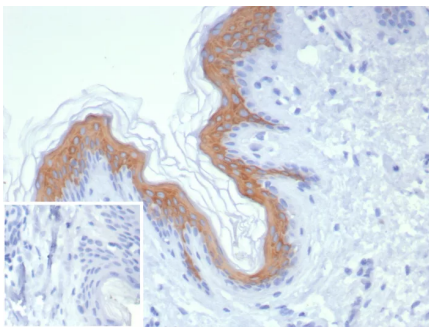
Product Images for Recombinant Cytokeratin 1 (Suprabasal Keratinocyte Marker) Antibody



Formalin-fixed, paraffin-embedded human skin stained with Cytokeratin 1 Recombinant Rabbit Monoclonal Antibody (KRT1/8342R). HIER: Tris/EDTA, pH9.0, 45min. 2°C: HRP-polymer, 30min. DAB, 5min.



SDS-PAGE Analysis Purified KRT1 Recombinant Rabbit Monoclonal Antibody (KRT1/8342R). Confirmation of Integrity and Purity of Antibody.



Formalin-fixed, paraffin-embedded human skin stained with Cytokeratin 1 Recombinant Rabbit Monoclonal Antibody (KRT1/8342R). Inset: PBS instead of primary antibody; secondary only negative control.

Specificity & Comments

Keratins are a family of intermediate filament proteins that assemble into filaments through forming heterodimers of one type I keratin (keratins 9 to 23) and one type II keratin (keratins 1 to 8). Keratins demonstrate tissue and differentiation specific expression profiles. Cytokeratin 1 is a hetero-tetramer of two type I as well as two type II keratins, keratin-10 (KRT10). Keratin 1 is differentiation specific keratin that is one of the predominant keratins in suprabasal keratinocytes in stratified epithelia. Mutations in keratin 1 cause epidermolytic hyperkeratosis.

Limitations and Warranty

This antibody is available for research use only and is not approved for use in diagnosis. There are no warranties, expressed or implied, which extend beyond this description. Company is not liable for any personal injury or economic loss resulting from this product.

Supplied As

200ug/ml of Ab purified from Bioreactor Concentrate by Protein A/G. Prepared in 10mM PBS with 0.05% BSA & 0.05% azide. Also available WITHOUT BSA & azide at 1.0mg/ml.

Storage and Stability

Antibody with azide - store at 2 to 8°C. Antibody without azide - store at -20 to -80°C. Antibody is stable for 24 months. Non-hazardous. No MSDS required.