

Recombinant CD48 (Pan Leukocyte Marker) Antibody

Rabbit Monoclonal Antibody [Clone CD48/8601R]

Catalog No	Format	Size
962-RBM11-P0	Purified Ab with BSA and Azide at 200ug/ml	20 ug
962-RBM11-P1	Purified Ab with BSA and Azide at 200ug/ml	100 ug
962-RBM11-P1ABX	Purified Ab WITHOUT BSA and Azide at 1.0mg/ml	100 ug

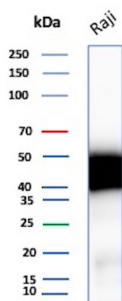
Applications	Tested Dillution	Note
Immunohistochemistry (IHC)	1-2ug/ml	30 min at RT. Staining of formalin-fixed tissues requires heating tissue sections in 10mM Tris with 1mM EDTA, pH 9.0, for 45 min at 95°C followed by cooling at RT for 20 minutes
Western Blot (WB)	2-4ug/ml	

Product Details

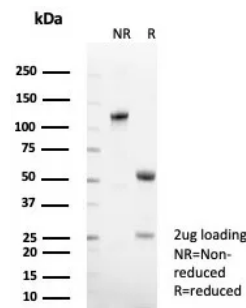
Clone	CD48/8601R
Gene Name	CD48
Immunogen	Recombinant fragment (around aa 59-178) of human CD48 protein (exact sequence is proprietary)
Host	Rabbit
Clonality	Monoclonal
Isotype / Light Chain	IgG / Kappa
Mol. Weight of Antigen	45kDa
Cellular Localization	Cell surface.
Species Reactivity	Human
Positive Control	Raji cells. Human lymph node or tonsil.

*Optimal dilution for a specific application should be determined.

Product Images for Recombinant CD48 (Pan Leukocyte Marker) Antibody



Western blot analysis of Raji cell lysate using CD48 Monospecific Recombinant Rabbit Monoclonal Antibody (CD48/8601R).



SDS-PAGE Analysis of Purified CD48 Recombinant Rabbit Monoclonal Antibody (CD48/8601R). Confirmation of Purity and Integrity of Antibody.

Specificity & Comments

Reacts with human CD48, a 45kDa glycosyl phosphatidyl-inositol (GPI)-anchored cell surface protein. CD48 is strongly expressed on lymphocytes and monocytes and weakly on granulocytes but is absent on platelets, fibroblasts, epithelium and endothelium. CD48 is one of marker for detecting the defects of GPI anchoring structure on the patients with paroxysmal nocturnal hemoglobinuria (PNH) and serves as a low affinity ligand for CD2.

Supplied As

200ug/ml of Ab purified from Bioreactor Concentrate by Protein A/G. Prepared in 10mM PBS with 0.05% BSA & 0.05% azide. Also available WITHOUT BSA & azide at 1.0mg/ml.

Storage and Stability

Antibody with azide - store at 2 to 8°C. Antibody without azide - store at -20 to -80°C. Antibody is stable for 24 months. Non-hazardous. No MSDS required.

Research Areas

Cardiovascular, Hematopoietic Stem Cells, Immune checkpoint

Limitations and Warranty

This antibody is available for research use only and is not approved for diagnosis. There are no warranties, expressed or implied, which extend beyond this description. Company is not liable for any personal injury or economic loss resulting from this product.
