

## Recombinant TACSTD2 / TROP2 (Epithelial Marker) Antibody

Rabbit Monoclonal Antibody [Clone TACSTD2/7349R]

Catalog No	Format	Size
4070-RBM9-P0	Purified Ab with BSA and Azide at 200ug/ml	20 ug
4070-RBM9-P1	Purified Ab with BSA and Azide at 200ug/ml	100 ug
4070-RBM9-P1ABX	Purified Ab WITHOUT BSA and Azide at 1.0mg/ml	100 ug

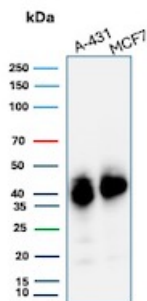
Applications	Tested Dillution	Note
Immunohistochemistry (IHC)	1-2ug/ml	30 min at RT. Staining of formalin-fixed tissues requires heating tissue sections in 10mM Tris with 1mM EDTA, pH 9.0, for 45 min at 95°C followed by cooling at RT for 20 minutes
Western Blot (WB)	2-4ug/ml	

### Product Details

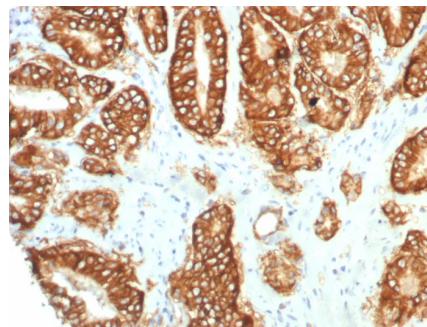
<b>Clone</b>	TACSTD2/7349R
<b>Gene Name</b>	TACSTD2
<b>Immunogen</b>	Recombinant fragment (around aa232-323) of human TACSTD2 protein (exact sequence is proprietary)
<b>Host</b>	Rabbit
<b>Clonality</b>	Monoclonal
<b>Isotype / Light Chain</b>	IgG / Kappa
<b>Mol. Weight of Antigen</b>	40kDa
<b>Cellular Localization</b>	Cell surface.
<b>Species Reactivity</b>	Human
<b>Positive Control</b>	A-431, MCF7, HT29 cells. Human breast or colon carcinoma.

\*Optimal dilution for a specific application should be determined.

### Product Images for Recombinant TACSTD2 / TROP2 (Epithelial Marker) Antibody



Western blot analysis of A-431 and MCF7 cell lysates using TACSTD2 /TROP2 (Epithelial Marker) Rabbit Recombinant Monoclonal Antibody (TACSTD2/7349R).



Formalin-fixed, paraffin-embedded human prostate carcinoma stained with TACSTD2 Recombinant Rabbit Monoclonal Antibody (TACSTD2/7349R). HIER: Tris/EDTA, pH9.0, 45min. 2°C: HRP-polymer, 30min. DAB, 5min.

### Specificity & Comments

TACSTD2 is a cell surface glycoprotein receptor. It is a single pass type I membrane protein containing one thyroglobulin type-1 domain, an epidermal growth factor-like repeat, a phosphatidylinositol binding site and tyrosine phosphorylation sites near the C-terminus. It plays a role in transducing intracellular calcium signals. It is expressed in trophoblast cells, cornea and multi-stratified epithelia. It is also highly expressed in several types of tumors and is involved in regulating the growth of carcinoma cells.

### Supplied As

200ug/ml of Ab purified from Bioreactor Concentrate by Protein A/G. Prepared in 10mM PBS with 0.05% BSA & 0.05% azide. Also available WITHOUT BSA & azide at 1.0mg/ml.

### Storage and Stability

Antibody with azide - store at 2 to 8°C. Antibody without azide - store at -20 to -80°C. Antibody is stable for 24 months. Non-hazardous. No MSDS required.

## Limitations and Warranty

This antibody is available for research use only and is not approved for use in diagnosis. There are no warranties, expressed or implied, which extend beyond this description. Company is not liable for any personal injury or economic loss resulting from this product.

---