

Recombinant NUT1 / NUTM1 / Snurportin 1 Antibody

Rabbit Monoclonal Antibody [Clone SNUPN/7351R]

Catalog No	Format	Size
10073-RBM1-P0	Purified Ab with BSA and Azide at 200ug/ml	20 ug
10073-RBM1-P1	Purified Ab with BSA and Azide at 200ug/ml	100 ug
10073-RBM1-P1ABX	Purified Ab WITHOUT BSA and Azide at 1.0mg/ml	100 ug

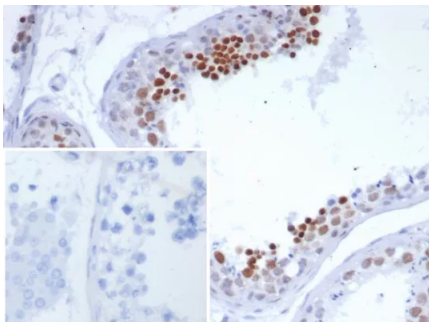
Applications	Tested Dillution	Note
Immunohistochemistry (IHC)	1-2ug/ml	30 min at RT. Staining of formalin-fixed tissues requires heating tissue sections in 10mM Tris with 1mM EDTA, pH 9.0, for 45 min at 95°C followed by cooling at RT for 20 minutes

Product Details

Clone	SNUPN/7351R
Gene Name	NUTM1
Immunogen	Recombinant fragment (around aa 900-1100) of human NUTM1 protein (exact sequence is proprietary)
Host	Rabbit
Clonality	Monoclonal
Isotype / Light Chain	IgG / Kappa
Mol. Weight of Antigen	120kDa
Cellular Localization	Nucleus. Cytoplasm.
Species Reactivity	Human
Positive Control	Human testis.

*Optimal dilution for a specific application should be determined.

Product Images for Recombinant NUT1 / NUTM1 / Snurportin 1 Antibody



Formalin-fixed, paraffin-embedded human testis stained with NUTM1 Recombinant Rabbit Monoclonal Antibody (SNUPN/7351R). Inset: PBS instead of primary antibody; secondary only negative control.

Specificity & Comments

NUTM1 (NUT Midline Carcinoma Family Member 1) is a Protein Coding gene. Diseases associated with NUTM1 include Nut Midline Carcinoma and Spindle Cell Sarcoma. Among its related pathways are Chromatin Regulation / Acetylation. An important paralog of this gene is NUTM2G. Plays a role in the regulation of proliferation. Regulates TERT expression by modulating SP1 binding to TERT promoter binding sites.

Supplied As

200ug/ml of Ab purified from Bioreactor Concentrate by Protein A/G. Prepared in 10mM PBS with 0.05% BSA & 0.05% azide. Also available WITHOUT BSA & azide at 1.0mg/ml.

Storage and Stability

Antibody with azide - store at 2 to 8°C. Antibody without azide - store at -20 to -80°C. Antibody is stable for 24 months. Non-hazardous. No MSDS required.

Limitations and Warranty

This antibody is available for research use only and is not approved for use in diagnosis. There are no warranties, expressed or implied, which extend beyond this description. Company is not liable for any personal injury or economic loss resulting from this product.