

## Crystallin Alpha B Antibody

Mouse Monoclonal Antibody [Clone CRYAB/7918]

Catalog No	Format	Size
1410-MSM18-P0	Purified Ab with BSA and Azide at 200ug/ml	20 ug
1410-MSM18-P1	Purified Ab with BSA and Azide at 200ug/ml	100 ug
1410-MSM18-P1ABX	Purified Ab WITHOUT BSA and Azide at 1.0mg/ml	100 ug

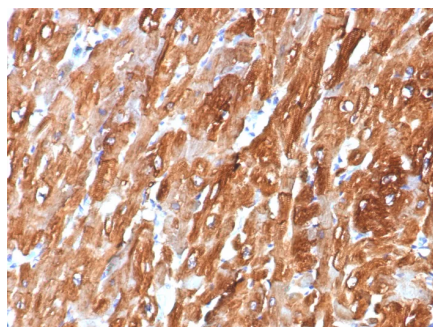
Applications	Tested Dillution	Note
Immunohistochemistry (IHC)	1-2ug/ml	30 min at RT. Staining of formalin-fixed tissues requires heating tissue sections in 10mM Tris with 1mM EDTA, pH 9.0, for 45 min at 95°C followed by cooling at RT for 20 minutes
Western Blot (WB)	2-4ug/ml	

### Product Details

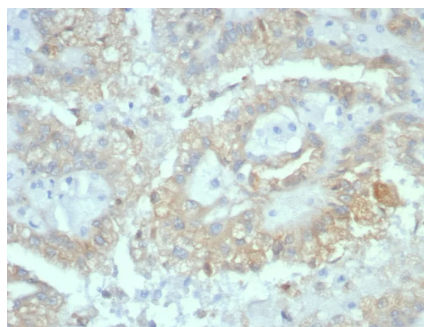
<b>Clone</b>	CRYAB/7918
<b>Gene Name</b>	CRYAB
<b>Immunogen</b>	Recombinant human full-length CRYAB protein
<b>Host</b>	Mouse
<b>Clonality</b>	Monoclonal
<b>Isotype / Light Chain</b>	IgG1 / Kappa
<b>Mol. Weight of Antigen</b>	Predicted: 20kDa; Observed: 22-30kDa
<b>Cellular Localization</b>	Cytoplasm, Nucleus, Secreted
<b>Species Reactivity</b>	Human
<b>Positive Control</b>	Human heart, kidney or brain. HeLa or Y79 cells.

*\*Optimal dilution for a specific application should be determined.*

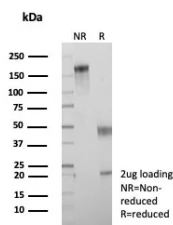
### Product Images for Crystallin Alpha B Antibody



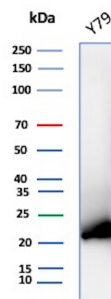
Formalin-fixed, paraffin-embedded human heart stained with Crystallin Alpha B Mouse Monoclonal Antibody (CRYAB/7918). HIER: Tris/EDTA, pH9.0, 45min. 2°: HRP-polymer, 30min. DAB, 5min.



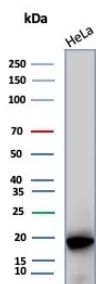
Formalin-fixed, paraffin-embedded human renal cell carcinoma stained with Crystallin Alpha B Mouse Monoclonal Antibody (CRYAB/7918). HIER: Tris/EDTA, pH9.0, 45min. 2°: HRP-polymer, 30min. DAB, 5min.



SDS-PAGE Analysis of Purified Crystallin Alpha B Mouse Monoclonal Antibody (CRYAB/7918). Confirmation of Purity and Integrity of Antibody.



Western blot analysis of Y79 cell lysate using Crystallin Alpha B Mouse Monoclonal Antibody (CRYAB/7918).



Western blot analysis of HeLa cell lysate using Crystallin Alpha B Mouse Monoclonal Antibody (CRYAB/7918).

### Specificity & Comments

Crystallins are the major proteins of the vertebrate eye lens, where they maintain the transparency and refractive index of the lens. Crystallins are divided into  $\alpha$ ,  $\beta$  and  $\gamma$  families, and the  $\alpha$ - and  $\beta$ -crystallins also compose a superfamily. Crystallins usually contain seven distinct protein regions, including four homologous motifs, a connecting peptide and N- and C-terminal extensions.  $\alpha$ -crystallins consist of three gene products,  $\alpha$ A-,  $\alpha$ B- and  $\alpha$ C-crystallin, which are members of the small heat shock protein family (HSP 20).  $\alpha$ -crystallins act as molecular chaperones by holding denatured proteins in large soluble aggregates. However, unlike other molecular chaperones,  $\alpha$ -crystallins do not renature these proteins. Expression of  $\alpha$ A-crystallin is restricted to the lens and defects of this gene cause the development of autosomal dominant congenital cataracts (ADCC). The human  $\alpha$ B-crystallin gene product is expressed in many tissues, including lens, heart and skeletal muscle. Elevated expression of  $\alpha$ B-crystallin is associated with many neurological diseases, and a missense mutation in this gene has co-segregated in a family with a Desmin-related myopathy.

### Limitations and Warranty

This antibody is available for research use only and is not approved for use in diagnosis. There are no warranties, expressed or implied, which extend beyond this description. Company is not liable for any personal injury or economic loss resulting from this product.

### Supplied As

200ug/ml of Ab purified from Bioreactor Concentrate by Protein A/G. Prepared in 10mM PBS with 0.05% BSA & 0.05% azide. Also available WITHOUT BSA & azide at 1.0mg/ml.

### Storage and Stability

Antibody with azide - store at 2 to 8°C. Antibody without azide - store at -20 to -80°C. Antibody is stable for 24 months. Non-hazardous. No MSDS required.

### Research Areas

Cardiovascular