

MyoD1 (Rhabdomyosarcoma Marker) Antibody

Mouse Monoclonal Antibody [Clone MYOD1/7149]

Catalog No	Format	Size
4654-MSM12-P0	Purified Ab with BSA and Azide at 200ug/ml	20 ug
4654-MSM12-P1	Purified Ab with BSA and Azide at 200ug/ml	100 ug
4654-MSM12-P1BX	Purified Ab WITHOUT BSA at 1.0mg/ml	100 ug

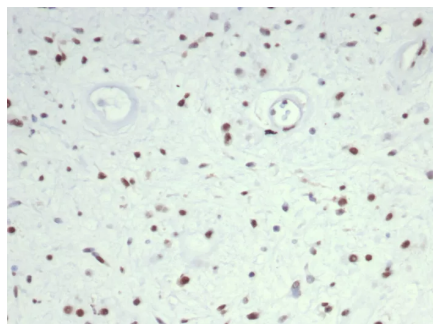
Applications	Tested Dillution	Note
Immunohistochemistry (IHC)	1-2ug/ml	30 min at RT. Staining of formalin-fixed tissues requires heating tissue sections in 10mM Tris with 1mM EDTA, pH 9.0, for 45 min at 95°C followed by cooling at RT for 20 minutes

Product Details

Clone	MYOD1/7149
Gene Name	MYOD1
Immunogen	Recombinant mouse MyoD1 protein
Host	Mouse
Clonality	Monoclonal
Isotype / Light Chain	IgG1 / Kappa
Mol. Weight of Antigen	45kDa
Cellular Localization	Nucleus. Only nuclear staining should be considered as evidence of skeletal muscle differentiation.
Species Reactivity	Human
Positive Control	Rhabdomyosarcoma

*Optimal dilution for a specific application should be determined.

Product Images for MyoD1 (Rhabdomyosarcoma Marker) Antibody



Formalin-fixed, paraffin-embedded human rhabdomyosarcoma stained with MyoD1 Mouse Monoclonal Antibody (MYOD1/7149). HIER: Tris/EDTA, pH9.0, 45min. 2°C: HRP-polymer, 30min. DAB, 5min.

Specificity & Comments

Recognizes a phosphor-protein of 45kDa, identified as MyoD1. The epitope of this MAb maps between amino acid 180-189 in the C-terminal of mouse MyoD1 protein. It does not cross react with myogenin, Myf5, or Myf6. Antibody to MyoD1 labels the nuclei of myoblasts in developing muscle tissues. MyoD1 is not detected in normal adult tissue, but is highly expressed in the tumor cell nuclei of rhabdomyosarcomas. Occasionally nuclear expression of MyoD1 is seen in ectomesenchymoma and a subset of Wilms tumors. Weak cytoplasmic staining is observed in several non-muscle tissues, including glandular epithelium and also in rhabdomyosarcomas, neuroblastomas, Ewing's sarcomas and alveolar soft part sarcomas.

Supplied As

200ug/ml of Ab purified from Bioreactor Concentrate by Protein A/G. Prepared in 10mM PBS with 0.05% BSA & 0.05% azide. Also available WITHOUT BSA at 1.0mg/ml.

Storage and Stability

Antibody with azide - store at 2 to 8°C. Antibody without azide - store at -20 to -80°C. Antibody is stable for 24 months. Non-hazardous. No MSDS required.

Research Areas

Cardiovascular, Developmental Biology, Mesenchymal Stem Cell Differentiation, Nuclear Marker

Limitations and Warranty

This antibody is available for research use only and is not approved for use in diagnosis. There are no warranties, expressed or implied, which extend beyond this description. Company is not liable for any personal injury or economic loss resulting from this product.
