

Recombinant p53 Tumor Suppressor Protein Antibody

Mouse Monoclonal Antibody [Clone rTP53/8579]

Catalog No	Format	Size
7157-MSM32-P0	Purified Ab with BSA and Azide at 200ug/ml	20 ug
7157-MSM32-P1	Purified Ab with BSA and Azide at 200ug/ml	100 ug
7157-MSM32-P1ABX	Purified Ab WITHOUT BSA and Azide at 1.0mg/ml	100 ug

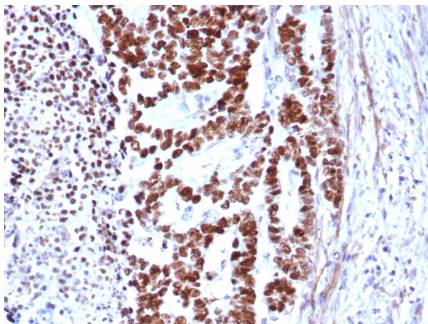
Applications	Tested Dillution	Note
Immunohistochemistry (IHC)	1-2ug/ml	30 min at RT. Staining of formalin-fixed tissues requires heating tissue sections in 10mM Tris with 1mM EDTA, pH 9.0, for 45 min at 95°C followed by cooling at RT for 20 minutes

Product Details

Clone	rTP53/8579
Gene Name	TP53
Immunogen	Recombinant full-length human TP53 protein
Host	Mouse
Clonality	Monoclonal
Isotype / Light Chain	IgG1 / Kappa
Mol. Weight of Antigen	53kDa
Cellular Localization	Nucleus.
Species Reactivity	Human
Positive Control	Breast or Colon carcinoma

*Optimal dilution for a specific application should be determined.

Product Images for Recombinant p53 Tumor Suppressor Protein Antibody



Formalin-fixed, paraffin-embedded human colon carcinoma stained with p53 Mouse Recombinant Monoclonal Antibody (rTP53/8579).

Specificity & Comments

The specificity of this monoclonal antibody to its intended target was validated by HuProt™ Array, containing more than 19,000, full-length human proteins. Recognizes a 53kDa protein, which is identified as p53 suppressor gene product. It reacts with the mutant as well as the wild form of p53. It is a tumor suppressor protein expressed in a wide variety of tissue types and is involved in regulating cell growth, replication, and apoptosis. It binds to MDM2, SV40 T antigen and human papilloma virus E6 protein. Positive nuclear staining with p53 antibody has been reported to be a negative prognostic factor in breast, lung, colorectal, and urothelial carcinoma. Anti-p53 positivity has also been used to differentiate uterine serous carcinoma from endometrioid carcinoma as well as to detect intratubular germ cell neoplasia. Mutations involving p53 are found in many malignant tumors, including breast, ovarian, bladder, colon, lung, and melanoma.

Supplied As

200ug/ml of Ab purified from Bioreactor Concentrate by Protein A/G. Prepared in 10mM PBS with 0.05% BSA & 0.05% azide. Also available WITHOUT BSA & azide at 1.0mg/ml.

Storage and Stability

Antibody with azide - store at 2 to 8°C. Antibody without azide - store at -20 to -80°C. Antibody is stable for 24 months. Non-hazardous. No MSDS required.

Research Areas

Breast Cancer, Cardiovascular, Immunology, AKT Signaling, Bladder Cancer, Colon Cancer, Cytokine Signaling, Defective Intrinsic Apoptosis, Infectious Disease, Lung Cancer, MAPK Signaling, Nuclear Marker, Ovarian Cancer, Signal Transduction, Transcription Factors

Limitations and Warranty

This antibody is available for research use only and is not approved for use diagnosis. There are no warranties, expressed or implied, which extend beyond this description. Company is not liable for any personal injury or economic loss resulting from this product.
