

## Recombinant Lewis Y (Tumor Marker) Antibody

Rabbit Monoclonal Antibody [Clone LWY/9243R]

Catalog No	Format	Size
RBM4-9243-P0	Purified Ab with BSA and Azide at 200ug/ml	20 ug
RBM4-9243-P1	Purified Ab with BSA and Azide at 200ug/ml	100 ug
RBM4-9243-P1ABX	Purified Ab WITHOUT BSA and Azide at 1.0mg/ml	100 ug

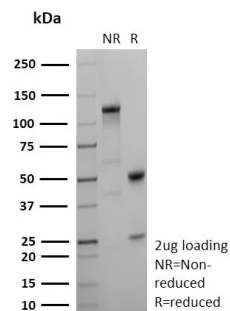
Applications	Tested Dillution	Note
Immunohistochemistry (IHC)	1-2ug/ml	30 min at RT. Staining of formalin-fixed tissues requires heating tissue sections in 10mM Tris with 1mM EDTA, pH 9.0, for 45 min at 95°C followed by cooling at RT for 20 minutes

### Product Details

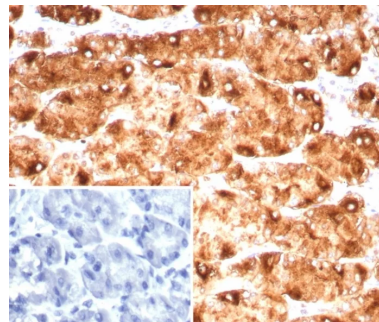
<b>Clone</b>	LWY/9243R
<b>Gene Name</b>	
<b>Immunogen</b>	H3396 cultured line established from a metastasis of a human breast adenocarcinoma.
<b>Host</b>	Rabbit
<b>Clonality</b>	Monoclonal
<b>Isotype / Light Chain</b>	IgG / Kappa
<b>Mol. Weight of Antigen</b>	Multiple
<b>Cellular Localization</b>	Cell membrane. Cytoplasm. Extracellular.
<b>Species Reactivity</b>	Human
<b>Positive Control</b>	bladder or hepatocellular carcinoma. colon Human lung

\*Optimal dilution for a specific application should be determined.

### Product Images for Recombinant Lewis Y (Tumor Marker) Antibody



SDS-PAGE Analysis of Purified Lewis Y Recombinant Rabbit Monoclonal Antibody (LWY/9243R). Confirmation of Purity and Integrity of Antibody.



Formalin-fixed, paraffin-embedded human stomach stained with Lewis Y Recombinant Rabbit Monoclonal Antibody (LWY/9243R). Inset: PBS instead of primary antibody; secondary only negative control.

### Specificity & Comments

This antibody recognizes a carbohydrate epitope present on tumor-associated Lewis Y antigen (Fucalpha1-2Galbeta1-4/3[Fucalpha1-3/4]GlcNAcbeta-). Lewis Y is expressed in large bowel tumors and colorectal carcinomas. It may be useful in the classification of human renal and bladder tumors. The Lewis Y antigen has been evaluated as a clinical marker for the diagnosis and prognosis of cholangiocarcinoma, hepatocellular carcinoma and breast cancer.

### Supplied As

200ug/ml of Ab purified from Bioreactor Concentrate by Protein A/G. Prepared in 10mM PBS with 0.05% BSA & 0.05% azide. Also available WITHOUT BSA & azide at 1.0mg/ml.

### Storage and Stability

Antibody with azide - store at 2 to 8°C. Antibody without azide - store at -20 to -80°C. Antibody is stable for 24 months. Non-hazardous. No MSDS required.

### Limitations and Warranty

This antibody is available for research use only and is not approved for use in diagnosis. There are no warranties, expressed or implied, which extend beyond this description. Company is not liable for any personal injury or economic loss resulting from this product.