

Suprabasin (SBSN) (CALB1) Antibody

Mouse Monoclonal Antibody [Clone SBSN/7964]

Catalog No	Format	Size
374897-MSM4-P0	Purified Ab with BSA and Azide at 200ug/ml	20 ug
374897-MSM4-P1	Purified Ab with BSA and Azide at 200ug/ml	100 ug
374897-MSM4-P1ABX	Purified Ab WITHOUT BSA and Azide at 1.0mg/ml	100 ug

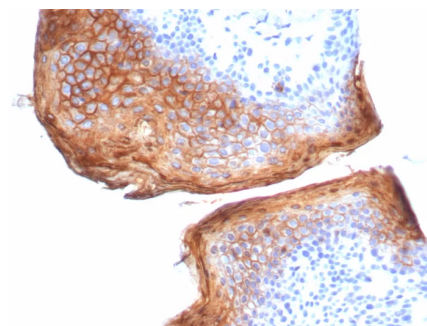
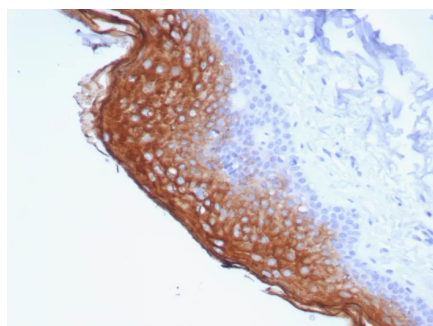
Applications	Tested Dillution	Note
Immunohistochemistry (IHC)	1-2ug/ml	30 min at RT. Staining of formalin-fixed tissues requires heating tissue sections in 10mM Tris with 1mM EDTA, pH 9.0, for 45 min at 95°C followed by cooling at RT for 20 minutes

Product Details

Clone	SBSN/7964
Gene Name	SBSN
Immunogen	Recombinant fragment of human SBSN protein (exact sequence is proprietary)
Host	Mouse
Clonality	Monoclonal
Isotype / Light Chain	IgG
Mol. Weight of Antigen	61kDa
Cellular Localization	Cytoplasm. Secreted.
Species Reactivity	Human
Positive Control	Human thymus uterus or esophagus.

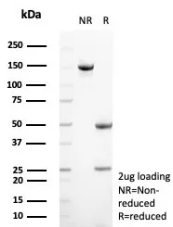
*Optimal dilution for a specific application should be determined.

Product Images for Suprabasin (SBSN) (CALB1) Antibody

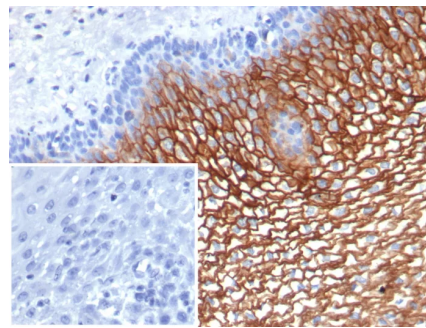


Formalin-fixed, paraffin-embedded human skin stained with Suprabasin (SBSN) Mouse Monoclonal Antibody (SBSN/7964). HIER: Tris/EDTA, pH9.0, 45min. 2°C: HRP-polymer, 30min. DAB, 5min.

Formalin-fixed, paraffin-embedded human skin stained with Suprabasin (SBSN) Mouse Monoclonal Antibody (SBSN/7964). HIER: Tris/EDTA, pH9.0, 45min. 2°C: HRP-polymer, 30min. DAB, 5min.



SDS-PAGE Analysis of Purified Suprabasin (SBSN) Mouse Monoclonal Antibody (SBSN/7964). Confirmation of Purity and Integrity of Antibody.



Formalin-fixed, paraffin-embedded human esophagus stained with Suprabasin (SBSN) Mouse Monoclonal Antibody (SBSN/7964). Inset: PBS instead of primary antibody; secondary only negative control.

Specificity & Comments

Suprabasin (SBSN) is a 247 amino acid secreted protein that is upregulated in differentiating keratinocytes and is thought to play a role in epidermal differentiation. Expressed in uterus, skin, thymus and esophagus, suprabasin is encoded by a gene that maps to human chromosome 19q13.12. Chromosome 19 consists of about 63 million bases with over 1,400 genes, making up over 2% of human genomic DNA. Chromosome 19 is the genetic home for a number of immunoglobulin superfamily members, including the killer cell and leukocyte Ig-like receptors, a number of ICAMs, the CEACAM and PSG families, and Fc α receptors. Key genes for eye color and hair color also map to chromosome 19. Peutz-Jeghers syndrome, spinocerebellar ataxia type 6, the stroke disorder CADASIL, hypercholesterolemia and Insulin-dependent diabetes have been linked to chromosome 19.

Limitations and Warranty

This antibody is available for research use only and is not approved for use in diagnosis. There are no warranties, expressed or implied, which extend beyond this description. Company is not liable for any personal injury or economic loss resulting from this product.

Supplied As

200ug/ml of Ab purified from Bioreactor Concentrate by Protein A/G. Prepared in 10mM PBS with 0.05% BSA & 0.05% azide. Also available WITHOUT BSA & azide at 1.0mg/ml.

Storage and Stability

Antibody with azide - store at 2 to 8°C. Antibody without azide - store at -20 to -80°C. Antibody is stable for 24 months. Non-hazardous. No MSDS required.