

LEF1 / TCF1 alpha (Transcription Factor) Antibody

Mouse Monoclonal Antibody [Clone LEF1/6764]

Catalog No	Format	Size
51176-MSM4-P0	Purified Ab with BSA and Azide at 200ug/ml	20 ug
51176-MSM4-P1	Purified Ab with BSA and Azide at 200ug/ml	100 ug
51176-MSM4-P1ABX	Purified Ab WITHOUT BSA and Azide at 1.0mg/ml	100 ug

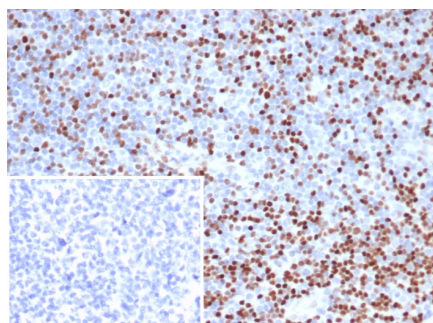
Applications	Tested Dillution	Note
Immunohistochemistry (IHC)	1-2ug/ml	30 min at RT. Staining of formalin-fixed tissues requires heating tissue sections in 10mM Tris with 1mM EDTA, pH 9.0, for 45 min at 95°C followed by cooling at RT for 20 minutes

Product Details

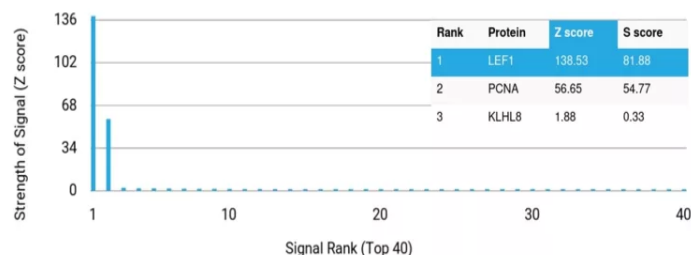
Clone	LEF1/6764
Gene Name	LEF1
Immunogen	Recombinant fragment of human LEF1 protein (exact sequence is proprietary)
Host	Mouse
Clonality	Monoclonal
Isotype / Light Chain	IgG1 / Kappa
Mol. Weight of Antigen	44kDa
Cellular Localization	Nucleus.
Species Reactivity	Human
Positive Control	Human tonsil and thymus.

*Optimal dilution for a specific application should be determined.

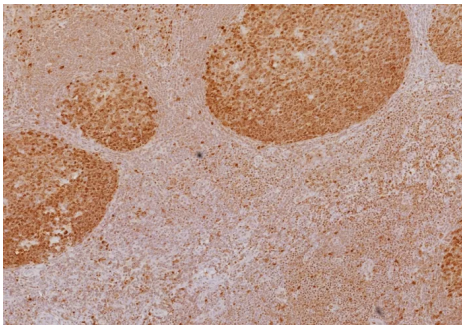
Product Images for LEF1 / TCF1 alpha (Transcription Factor) Antibody



Formalin-fixed, paraffin-embedded human tonsil stained with LEF1 Mouse Monoclonal Antibody (LEF1/6764). Inset: PBS instead of primary antibody; secondary only negative control.



Analysis of Protein Array containing more than 19,000 full-length human proteins using LEF1-Monospecific Mouse Monoclonal Antibody (LEF1/6764). Z- and S- Score: The Z-score represents the strength of a signal that a monoclonal antibody (MAb) (in combination with a fluorescently-tagged anti-IgG secondary antibody) produces when binding to a particular protein on the HuProt™ array. Z-scores are described in units of standard deviations (SD's) above the mean value of all signals generated on that array. If targets on HuProt™ are arranged in descending order of the Z-score, the S-score is the difference (also in units of SD's) between the Z-score. S-score therefore represents the relative target specificity of a MAb to its intended target. A MAb is considered to specific to its intended target, if the MAb has an S-score of at least 2.5. For example, if a MAb binds to protein X with a Z-score of 43 and to protein Y with a Z-score of 14, then the S-score for the binding of that MAb to protein X is equal to 29.



Formalin-fixed, paraffin-embedded human tonsil stained with LEF1 Mouse Monoclonal Antibody (LEF1/6764). HIER: Tris/EDTA, pH9.0, 45min. 2°C: HRP-polymer, 30min. DAB, 5min.

Specificity & Comments

Lymphoid Enhancing Factor 1 (LEF1) is a transcription factor that belongs to the TCF/LEF family. LEF1 participates as a regulator in Wnt signaling pathways. LEF1 is an important factor in lymphopoiesis and is expressed normally in T and pro-B cells but not expressed in mature B cells. Anti-LEF1 may be used as an aid for differentiation of chronic lymphocytic leukemia/small lymphocytic lymphoma from other small B cell lymphomas.

Supplied As

200ug/ml of Ab purified from Bioreactor Concentrate by Protein A/G. Prepared in 10mM PBS with 0.05% BSA & 0.05% azide. Also available WITHOUT BSA & azide at 1.0mg/ml.

Storage and Stability

Antibody with azide store at 2 to 8°C. Antibody without azide store at -20 to -80°C. Antibody is stable for 24 months. Non-hazardous. No MSDS required.

Research Areas

Breast Cancer, Cardiovascular, Developmental Biology, BBB VCAM-1 Signaling, Colon Cancer, Endothelial Cell Marker, Nuclear Marker, Signal Transduction, Transcription Factors

Limitations and Warranty

This antibody is available for research use only and is not approved for use in diagnosis. There are no warranties, expressed or implied, which extend beyond this description. Company is not liable for any personal injury or economic loss resulting from this product.