

Recombinant Helicobacter pylori (Catalase) Antibody

Rabbit Monoclonal Antibody [Clone HPYL/8548R]

Catalog No	Format	Size
RBM24-8548-P0	Purified Ab with BSA and Azide at 200ug/ml	20 ug
RBM24-8548-P1	Purified Ab with BSA and Azide at 200ug/ml	100 ug
RBM24-8548-P1ABX	Purified Ab WITHOUT BSA at 1.0mg/ml	100 ug

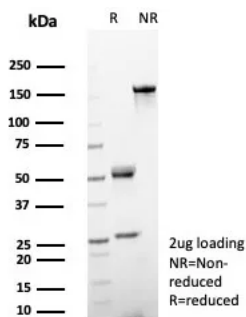
Applications	Tested Dillution	Note
Immunohistochemistry (IHC)	1-2ug/ml	30 min at RT. Staining of formalin-fixed tissues requires heating tissue sections in 10mM Tris with 1mM EDTA, pH 9.0, for 45 min at 95°C followed by cooling at RT for 20 minutes

Product Details

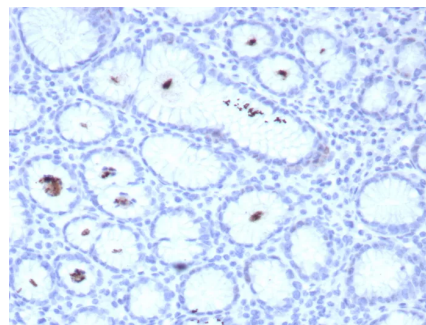
Clone	HPYL/8548R
Gene Name	
Immunogen	Recombinant Helicobacter pylori Catalase protein fragment (around aa323-445) (Exact sequence is proprietary)
Host	Rabbit
Clonality	Monoclonal
Isotype / Light Chain	IgG / Kappa
Mol. Weight of Antigen	58kDa
Cellular Localization	Cell Surface. Cytoplasm.
Species Reactivity	Helicobacter Pylori
Positive Control	Helicobacter pylori infected stomach biopsy

*Optimal dilution for a specific application should be determined.

Product Images for Recombinant Helicobacter pylori (Catalase) Antibody



SDS-PAGE Analysis of Purified H. pylori Recombinant Rabbit Monoclonal Antibody (HPYL/8548R). Confirmation of Purity and Integrity of Antibody.



Formalin-fixed, paraffin-embedded human H. pylori-infected stomach stained with H. pylori Recombinant Rabbit Monoclonal Antibody (HPYL/8548R). HIER: Tris/EDTA, pH9.0, 45min. 2°C: HRP-polymer, 30min. DAB, 5min.

Specificity & Comments

The spiral shaped bacterium *Helicobacter pylori* is strongly associated with inflammation of the stomach and is also implicated in the development of gastric malignancy. *H. pylori* is known to cause peptic ulcers and chronic gastritis in human. It is associated with duodenal ulcers and may be involved in development of adenocarcinoma and low-grade lymphoma of mucosa associated lymphoid tissue in the stomach. This antibody stains the individual *H. pylori* bacterium when it presents on the surface of the epithelium or in the cytoplasm of the epithelial cells in biopsy tissue sections from the antrum and body of the stomach.

Supplied As

200ug/ml of Ab purified from Bioreactor Concentrate by Protein A/G. Prepared in 10mM PBS with 0.05% BSA & 0.05% azide. Also available WITHOUT BSA & azide at 1.0mg/ml.

Storage and Stability

Antibody with azide - store at 2 to 8°C. Antibody without azide - store at -20 to -80°C. Antibody is stable for 24 months. Non-hazardous. No MSDS required.

Limitations and Warranty

This antibody is available for research use only and is not approved for use in diagnosis. There are no warranties, expressed or implied, which extend beyond this description. Company is not liable for any personal injury or economic loss resulting from this product.
