

p57Kip2 (Mitotic Inhibitor/Suppressor Protein) Antibody

Mouse Monoclonal Antibody [Clone KIP2/7186]

Catalog No	Format	Size
1028-MSM6-P0	Purified Ab with BSA and Azide at 200ug/ml	20 ug
1028-MSM6-P1	Purified Ab with BSA and Azide at 200ug/ml	100 ug
1028-MSM6-P1ABX	Purified Ab WITHOUT BSA and Azide at 1.0mg/ml	100 ug

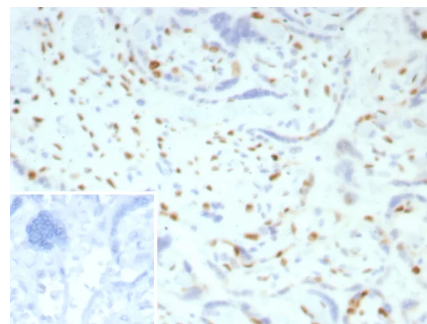
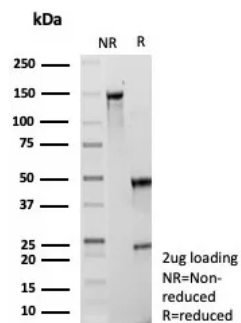
Applications	Tested Dillution	Note
Immunohistochemistry (IHC)	1-2ug/ml	30 min at RT. Staining of formalin-fixed tissues requires heating tissue sections in 10mM Tris with 1mM EDTA, pH 9.0, for 45 min at 95°C followed by cooling at RT for 20 minutes

Product Details

Clone	KIP2/7186
Gene Name	CDKN1C
Immunogen	Recombinant full-length human p57Kip2 protein
Host	Mouse
Clonality	Monoclonal
Isotype / Light Chain	IgG1 / Kappa
Mol. Weight of Antigen	57kDa
Cellular Localization	Nucleus.
Species Reactivity	Human
Positive Control	Human colon placenta or prostate carcinomas.

*Optimal dilution for a specific application should be determined.

Product Images for p57Kip2 (Mitotic Inhibitor/Suppressor Protein) Antibody



SDS-PAGE Analysis of Purified p57 Mouse Monoclonal Antibody (KIP2/7186). Confirmation of Purity and Integrity of Antibody.

IHC analysis of formalin-fixed, paraffin-embedded human placenta p57 Mouse Monoclonal Antibody (KIP2/7186). Inset: PBS instead of primary antibody; secondary only negative control.

Specificity & Comments

Recognizes a protein of 57kDa, identified as p57Kip2. It shows no cross-reaction with p27Kip1. p57Kip2 is a potent tight-binding inhibitor of several G1 cyclin complexes, and is a negative regulator of cell proliferation. Anti-p57 has been used as an aide in identification of complete hydatidiform mole (CHM) (no nuclear labeling of cytotrophoblasts and stromal cells) from partial hydatidiform mole (PHM) in which both cytotrophoblasts and stromal cells stain. The histological differentiation of complete mole, partial mole, and hydropic spontaneous abortion is problematic. Most complete hydatidiform moles are diploid, whereas most partial moles are triploid. Ploidy studies will identify partial moles, but will not differentiate complete moles from non-molar gestations. Complete moles carry a high risk of persistent disease and choriocarcinoma, while partial moles have a very low risk. In normal placenta, many cytotrophoblast nuclei and stromal cells are labeled with this antibody. Similar findings apply to PHM and hydropic abortus tissues. Intervillous trophoblastic islands (IVTIs) demonstrate nuclear labeling in all three entities and serve as an internal control.

Limitations and Warranty

This antibody is available for research use only and is not approved for use in diagnosis. There are no warranties, expressed or implied, which extend beyond this description. Company is not liable for any personal injury or economic loss resulting from this product.

Supplied As

200ug/ml of Ab purified from Bioreactor Concentrate by Protein A/G. Prepared in 10mM PBS with 0.05% BSA & 0.05% azide. Also available WITHOUT BSA & azide at 1.0mg/ml.

Storage and Stability

Antibody with azide - store at 2 to 8°C. Antibody without azide - store at -20 to -80°C. Antibody is stable for 24 months. Non-hazardous. No MSDS required.

Research Areas

Endothelial Cell Marker, Infectious Disease, Lung Cancer, Nuclear Marker
